



Datasheet for ABIN7237435

## anti-MTFR1 antibody



[Go to Product page](#)

### 2 Images

#### Overview

Quantity:	200 µL
Target:	MTFR1
Reactivity:	Human
Host:	Rabbit
Clonality:	Polyclonal
Conjugate:	This MTFR1 antibody is un-conjugated
Application:	Western Blotting (WB), ELISA, Immunohistochemistry (IHC)

#### Product Details

Immunogen:	Recombinant protein of human MTFR1
Isotype:	IgG
Characteristics:	Polyclonal Antibody
Purification:	Affinity purification

#### Target Details

Target:	MTFR1
Alternative Name:	MTFR1 ( <a href="#">MTFR1 Products</a> )
Background:	This gene encodes a mitochondrial protein that is characterized by a poly-proline rich region. A chicken homolog of this protein promotes mitochondrial fission and the mouse homolog protects cells from oxidative stress. A related pseudogene of this gene is found on chromosome X.

## Target Details

Molecular Weight: 37 kDa

UniProt: [Q15390](#)

## Application Details

Application Notes: WB 1:500-1:2000, IHC 1:50-1:200

Restrictions: For Research Use only

## Handling

Format: Liquid

Concentration: 0.4 mg/mL

Buffer: PBS with 0.05 % sodium azide and 50 % glycerol, PH7.4

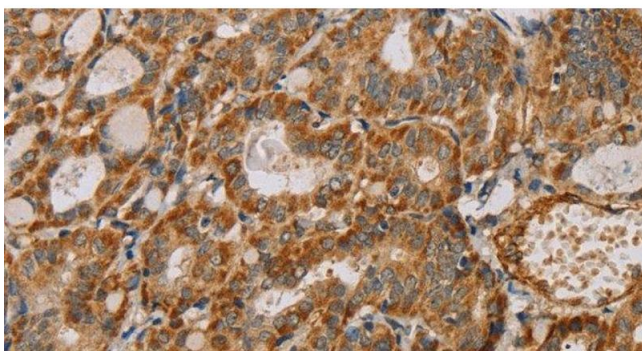
Preservative: Sodium azide

Precaution of Use: This product contains Sodium azide: a POISONOUS AND HAZARDOUS SUBSTANCE which should be handled by trained staff only.

Storage: -20 °C

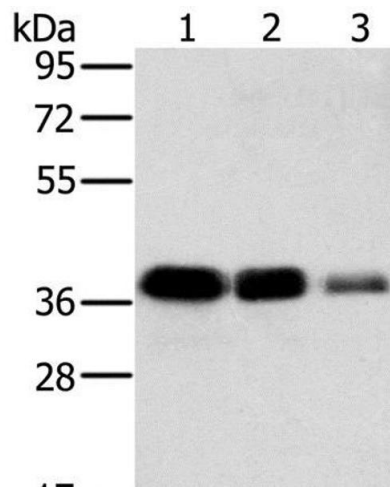
Storage Comment: Store at -20°C. Avoid freeze / thaw cycles.

## Images



### Immunohistochemistry (Paraffin-embedded Sections)

**Image 1.** Immunohistochemistry of paraffin-embedded Human thyroid cancer using MTFR1 Polyclonal Antibody at dilution of 1:40



### Western Blotting

**Image 2.** Western Blot analysis of A549, HT-29 and A172 cell using MTRF1 Polyclonal Antibody at dilution of 1:500