

Datasheet for ABIN7237448
anti-MYL3/CMLC1 antibody[Go to Product page](#)

3 Images

Overview

Quantity:	200 µL
Target:	MYL3/CMLC1 (MYL3)
Reactivity:	Human, Mouse, Rat
Host:	Rabbit
Clonality:	Polyclonal
Conjugate:	This MYL3/CMLC1 antibody is un-conjugated
Application:	Western Blotting (WB), ELISA, Immunohistochemistry (IHC)

Product Details

Immunogen:	Recombinant protein of human MYL3
Isotype:	IgG
Characteristics:	Polyclonal Antibody
Purification:	Affinity purification

Target Details

Target:	MYL3/CMLC1 (MYL3)
Alternative Name:	MYL3 (MYL3 Products)
Background:	MYL3 encodes myosin light chain 3, an alkali light chain also referred to in the literature as both the ventricular isoform and the slow skeletal muscle isoform. Mutations in MYL3 have been identified as a cause of mid-left ventricular chamber type hypertrophic cardiomyopathy.

Target Details

Molecular Weight: 22 kDa

UniProt: [P08590](#)

Application Details

Application Notes: WB 1:1000-1:5000, IHC 1:50-1:200

Restrictions: For Research Use only

Handling

Format: Liquid

Concentration: 0.5 mg/mL

Buffer: PBS with 0.05 % sodium azide and 50 % glycerol, PH7.4

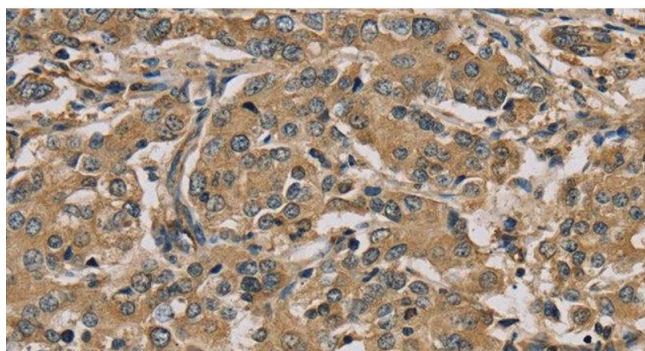
Preservative: Sodium azide

Precaution of Use: This product contains Sodium azide: a POISONOUS AND HAZARDOUS SUBSTANCE which should be handled by trained staff only.

Storage: -20 °C

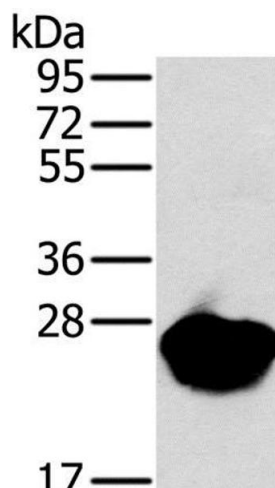
Storage Comment: Store at -20°C. Avoid freeze / thaw cycles.

Images



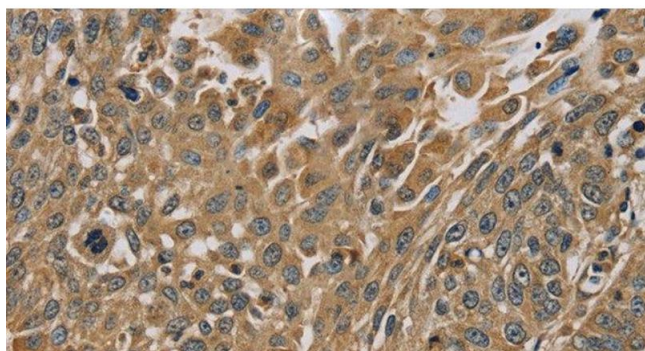
Immunohistochemistry (Paraffin-embedded Sections)

Image 1. Immunohistochemistry of paraffin-embedded Human liver cancer using MYL3 Polyclonal Antibody at dilution of 1:45



Western Blotting

Image 2. Western Blot analysis of Mouse heart tissue using MYL3 Polyclonal Antibody at dilution of 1:650



Immunohistochemistry (Paraffin-embedded Sections)

Image 3. Immunohistochemistry of paraffin-embedded Human lung cancer using MYL3 Polyclonal Antibody at dilution of 1:45