

Datasheet for ABIN7237565

**anti-PAGE5 antibody**[Go to Product page](#)**1** Image

## Overview

|              |                                      |
|--------------|--------------------------------------|
| Quantity:    | 200 µL                               |
| Target:      | PAGE5                                |
| Reactivity:  | Human                                |
| Host:        | Rabbit                               |
| Clonality:   | Polyclonal                           |
| Conjugate:   | This PAGE5 antibody is un-conjugated |
| Application: | Immunohistochemistry (IHC), ELISA    |

## Product Details

|                  |                                    |
|------------------|------------------------------------|
| Immunogen:       | Recombinant protein of human PAGE5 |
| Isotype:         | IgG                                |
| Characteristics: | Polyclonal Antibody                |
| Purification:    | Affinity purification              |

## Target Details

|                   |   |
|-------------------|---|
| Target:           | PAGE5   |
| Alternative Name: | PAGE5 ( <a href="#">PAGE5 Products</a> )  |
| Background:       | This gene is a member of the GAGE family, which is expressed in a variety of tumors and in some fetal and reproductive tissues. The protein encoded by this gene shares a sequence similarity with other GAGE/PAGE proteins. It may also belong to a family of CT (cancer-testis) antigens. Multiple alternatively spliced transcript variants encoding distinct isoforms have been |

## Target Details

found for this gene, but the biological validity of some variants have not been determined.

UniProt: [Q96GU1](#)

## Application Details

Application Notes: IHC 1:50-1:300

Restrictions: For Research Use only

## Handling

Format: Liquid

Concentration: 1.2 mg/mL

Buffer: PBS with 0.05 % sodium azide and 50 % glycerol, PH7.4

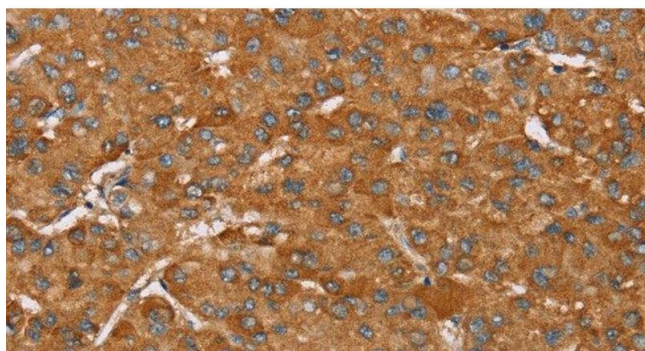
Preservative: Sodium azide

Precaution of Use: This product contains Sodium azide: a POISONOUS AND HAZARDOUS SUBSTANCE which should be handled by trained staff only.

Storage: -20 °C

Storage Comment: Store at -20°C. Avoid freeze / thaw cycles.

## Images



### Immunohistochemistry (Paraffin-embedded Sections)

**Image 1.** Immunohistochemistry of paraffin-embedded Human liver cancer tissue using PAGE5 Polyclonal Antibody at dilution 1:55