

Datasheet for ABIN7237592

anti-MSMB antibody**3** Images[Go to Product page](#)

Overview

Quantity:	200 µL
Target:	MSMB
Reactivity:	Human
Host:	Rabbit
Clonality:	Polyclonal
Conjugate:	This MSMB antibody is un-conjugated
Application:	Western Blotting (WB), Immunohistochemistry (IHC), ELISA

Product Details

Immunogen:	Recombinant protein of human MSMB
Isotype:	IgG
Characteristics:	Polyclonal Antibody
Purification:	Affinity purification

Target Details

Target:	MSMB
Alternative Name:	MSMB (MSMB Products)
Background:	<p>The protein encoded by this gene is a member of the immunoglobulin binding factor family. It is synthesized by the epithelial cells of the prostate gland and secreted into the seminal plasma.</p> <p>This protein has inhibin-like activity. It may have a role as an autocrine paracrine factor in uterine, breast and other female reproductive tissues. The expression of the encoded protein is</p>

Target Details

found to be decreased in prostate cancer. Two alternatively spliced transcript variants encoding different isoforms are described for this gene.

Molecular Weight: 13 kDa

UniProt: [P08118](#)

Application Details

Application Notes: WB 1:500-1:2000, IHC 1:50-1:200

Restrictions: For Research Use only

Handling

Format: Liquid

Concentration: 0.5 mg/mL

Buffer: PBS with 0.05 % sodium azide and 50 % glycerol, PH7.4

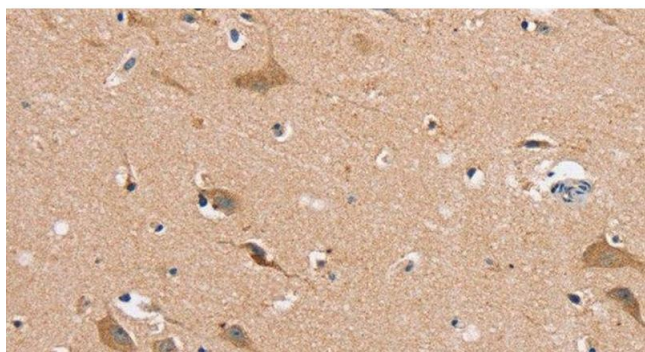
Preservative: Sodium azide

Precaution of Use: This product contains Sodium azide: a POISONOUS AND HAZARDOUS SUBSTANCE which should be handled by trained staff only.

Storage: -20 °C

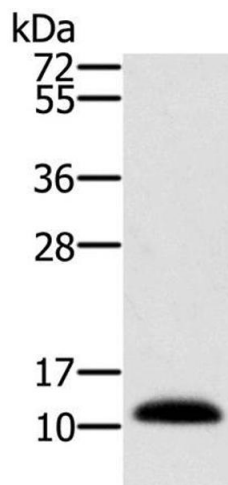
Storage Comment: Store at -20°C. Avoid freeze / thaw cycles.

Images



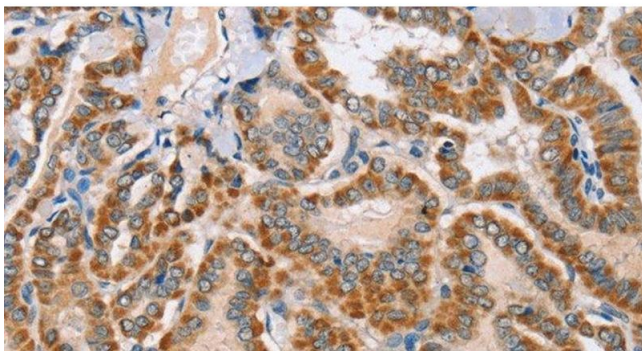
Immunohistochemistry (Paraffin-embedded Sections)

Image 1. Immunohistochemistry of paraffin-embedded Human brain using MSMB Polyclonal Antibody at dilution of 1:30



Western Blotting

Image 2. Western Blot analysis of Human prostate tissue using MSMB Polyclonal Antibody at dilution of 1:250



Immunohistochemistry (Paraffin-embedded Sections)

Image 3. Immunohistochemistry of paraffin-embedded Human thyroid cancer using MSMB Polyclonal Antibody at dilution of 1:30