

Datasheet for ABIN7237604

anti-PPP2CA antibody

3 Images

[Go to Product page](#)

Overview

Quantity:	200 µL
Target:	PPP2CA
Reactivity:	Human, Mouse, Rat
Host:	Rabbit
Clonality:	Polyclonal
Conjugate:	This PPP2CA antibody is un-conjugated
Application:	Western Blotting (WB), ELISA, Immunohistochemistry (IHC)

Product Details

Immunogen:	Recombinant protein of human PPP2CA
Isotype:	IgG
Characteristics:	Polyclonal Antibody
Purification:	Affinity purification

Target Details

Target:	PPP2CA
Alternative Name:	PPP2CA (PPP2CA Products)
Background:	This gene encodes the phosphatase 2A catalytic subunit. Protein phosphatase 2A is one of the four major Ser/Thr phosphatases, and it is implicated in the negative control of cell growth and division. It consists of a common heteromeric core enzyme, which is composed of a catalytic subunit and a constant regulatory subunit, that associates with a variety of regulatory subunits.

Target Details

This gene encodes an alpha isoform of the catalytic subunit.

Molecular Weight: 36 kDa

UniProt: [P67775](#)

Pathways: [PI3K-Akt Signaling](#), [Mitotic G1-G1/S Phases](#), [Hepatitis C](#), [Toll-Like Receptors Cascades](#)

Application Details

Application Notes: WB 1:1000-1:5000, IHC 1:25-1:100

Restrictions: For Research Use only

Handling

Format: Liquid

Concentration: 0.2 mg/mL

Buffer: PBS with 0.05 % sodium azide and 50 % glycerol, PH7.4

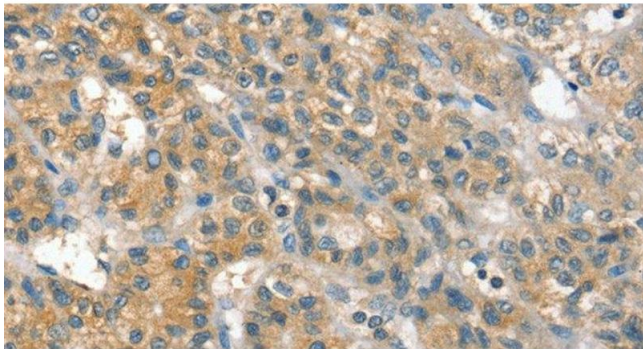
Preservative: Sodium azide

Precaution of Use: This product contains Sodium azide: a POISONOUS AND HAZARDOUS SUBSTANCE which should be handled by trained staff only.

Storage: -20 °C

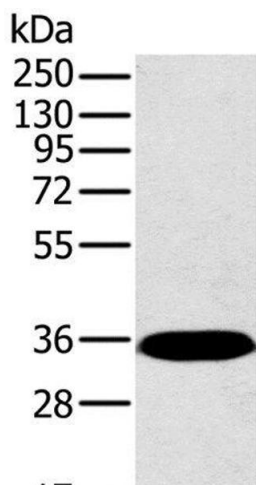
Storage Comment: Store at -20°C. Avoid freeze / thaw cycles.

Images



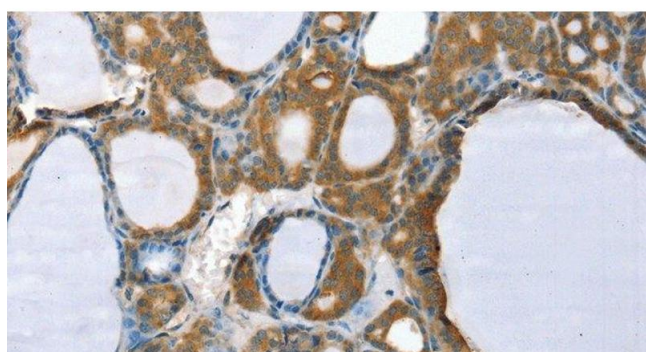
Immunohistochemistry (Paraffin-embedded Sections)

Image 1. Immunohistochemistry of paraffin-embedded Human liver cancer using PPP2CA Polyclonal Antibody at dilution of 1:35



Western Blotting

Image 2. Western Blot analysis of Mouse brain tissue using PPP2CA Polyclonal Antibody at dilution of 1:450



Immunohistochemistry (Paraffin-embedded Sections)

Image 3. Immunohistochemistry of paraffin-embedded Human thyroid cancer using PPP2CA Polyclonal Antibody at dilution of 1:35