

Datasheet for ABIN7237619

**anti-PYGL antibody****3** Images[Go to Product page](#)

## Overview

Quantity:	200 µL
Target:	PYGL
Reactivity:	Human, Rat, Mouse
Host:	Rabbit
Clonality:	Polyclonal
Conjugate:	This PYGL antibody is un-conjugated
Application:	Western Blotting (WB), Immunohistochemistry (IHC), ELISA

## Product Details

Immunogen:	Recombinant protein of human PYGL
Isotype:	IgG
Characteristics:	Polyclonal Antibody
Purification:	Affinity purification

## Target Details

Target:	PYGL
Alternative Name:	PYGL ( <a href="#">PYGL Products</a> )
Background:	<p>This gene encodes a homodimeric protein that catalyses the cleavage of alpha-1,4-glucosidic bonds to release glucose-1-phosphate from liver glycogen stores. This protein switches from inactive phosphorylase B to active phosphorylase A by phosphorylation of serine residue 15.</p> <p>Activity of this enzyme is further regulated by multiple allosteric effectors and hormonal</p>

## Target Details

controls. Humans have three glycogen phosphorylase genes that encode distinct isozymes that are primarily expressed in liver, brain and muscle, respectively.

Molecular Weight: 97 kDa

UniProt: [P06737](#)

Pathways: [Carbohydrate Homeostasis](#), [Cellular Glucan Metabolic Process](#)

## Application Details

Application Notes: WB 1:500-1:2000, IHC 1:30-1:150

Restrictions: For Research Use only

## Handling

Format: Liquid

Concentration: 0.4 mg/mL

Buffer: PBS with 0.05 % sodium azide and 50 % glycerol, PH7.4

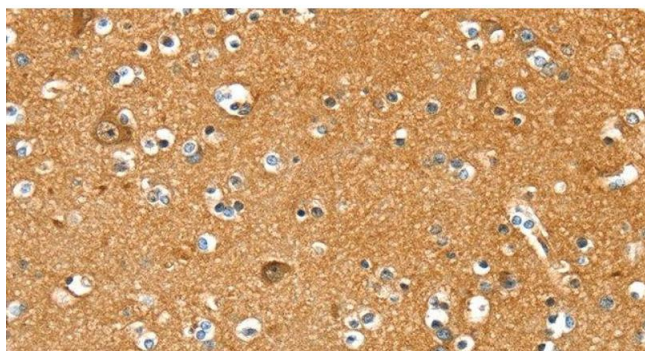
Preservative: Sodium azide

Precaution of Use: This product contains Sodium azide: a POISONOUS AND HAZARDOUS SUBSTANCE which should be handled by trained staff only.

Storage: -20 °C

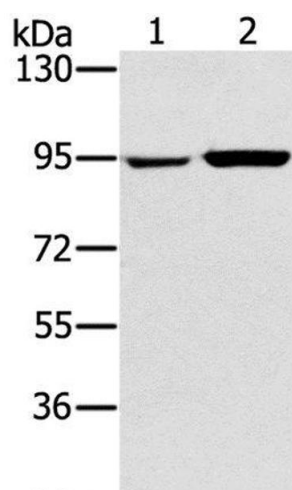
Storage Comment: Store at -20°C. Avoid freeze / thaw cycles.

## Images



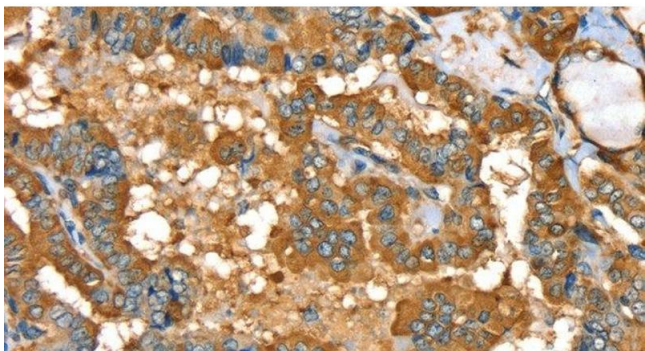
### Immunohistochemistry (Paraffin-embedded Sections)

**Image 1.** Immunohistochemistry of paraffin-embedded Human brain using PYGL Polyclonal Antibody at dilution of 1:35



**Western Blotting**

**Image 2.** Western Blot analysis of 231 and PC3 cell using PYGL Polyclonal Antibody at dilution of 1:400



**Immunohistochemistry (Paraffin-embedded Sections)**

**Image 3.** Immunohistochemistry of paraffin-embedded Human thyroid cancer using PYGL Polyclonal Antibody at dilution of 1:35