



[Go to Product page](#)

Datasheet for ABIN7237634  
**anti-RASSF7 antibody**

2 Images

Overview

Quantity:	200 µL
Target:	RASSF7
Reactivity:	Human
Host:	Rabbit
Clonality:	Polyclonal
Conjugate:	This RASSF7 antibody is un-conjugated
Application:	ELISA, Western Blotting (WB), Immunohistochemistry (IHC)

Product Details

Immunogen:	Recombinant protein of human RASSF7
Isotype:	IgG
Characteristics:	Polyclonal Antibody
Purification:	Affinity purification

Target Details

Target:	RASSF7
Alternative Name:	RASSF7 ( <a href="#">RASSF7 Products</a> )
Background:	RASSF7 (Ras association domain-containing protein 7), also designated HRAS1-related cluster protein 1, is a 373 amino acid protein that localizes to the centrosome. RASSF7, RASSF8, RASSF9 and RASSF10 are four evolutionary conserved proteins that are collectively known as the N-terminal RASSF family. Expressed in skin, neural tube and eye, RASSF7 is believed to play

## Target Details

an essential role in mitosis. Further supporting its mitotic role, knockdown of Xenopus RASSF7 has been shown to influence cell failure to form mitotic spindle and also cause nuclear breakdown and apoptosis.

Molecular Weight: 40 kDa

UniProt: [Q02833](#)

## Application Details

Application Notes: WB 1:500-1:2000, IHC 1:25-1:100

Restrictions: For Research Use only

## Handling

Format: Liquid

Concentration: 0.7 mg/mL

Buffer: PBS with 0.05 % sodium azide and 50 % glycerol, PH7.4

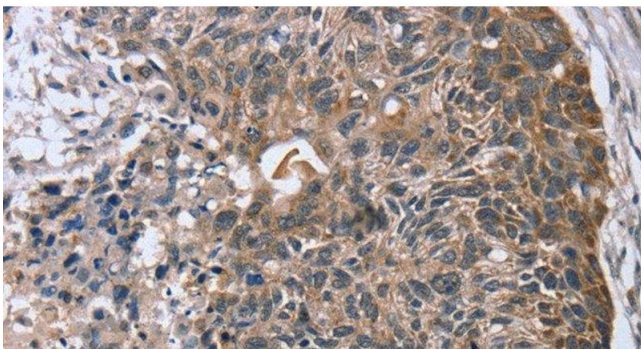
Preservative: Sodium azide

Precaution of Use: This product contains Sodium azide: a POISONOUS AND HAZARDOUS SUBSTANCE which should be handled by trained staff only.

Storage: -20 °C

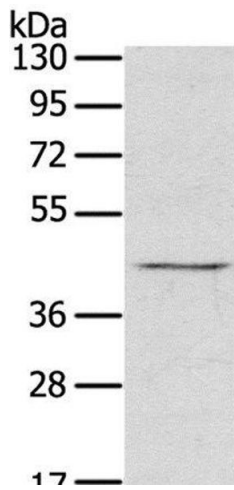
Storage Comment: Store at -20°C. Avoid freeze / thaw cycles.

## Images



### Immunohistochemistry (Paraffin-embedded Sections)

**Image 1.** Immunohistochemistry of paraffin-embedded Human esophagus cancer using RASSF7 Polyclonal Antibody at dilution of 1:45



### Western Blotting

**Image 2.** Western Blot analysis of Raji cell using RASSF7 Polyclonal Antibody at dilution of 1:800