

Datasheet for ABIN7237650

anti-RNH1 antibody

3 Images

[Go to Product page](#)

Overview

Quantity:	200 µL
Target:	RNH1
Reactivity:	Human
Host:	Rabbit
Clonality:	Polyclonal
Conjugate:	This RNH1 antibody is un-conjugated
Application:	Western Blotting (WB), Immunohistochemistry (IHC), ELISA

Product Details

Immunogen:	Recombinant protein of human RNH1
Isotype:	IgG
Characteristics:	Polyclonal Antibody
Purification:	Affinity purification

Target Details

Target:	RNH1
Alternative Name:	RNH1 (RNH1 Products)
Background:	Placental ribonuclease inhibitor (PRI) is a member of a family of proteinaceous cytoplasmic RNase inhibitors that occur in many tissues and bind to both intracellular and extracellular RNases (summarized by Lee et al., 1988 [PubMed 3219362]). In addition to control of intracellular RNases, the inhibitor may have a role in the regulation of angiogenin (MIM 105850).

Target Details

Ribonuclease inhibitor, of 50,000 Da, binds to ribonucleases and holds them in a latent form.

Molecular Weight: 50 kDa

UniProt: [P13489](#)

Application Details

Application Notes: WB 1:500-1:2000, IHC 1:25-1:100

Restrictions: For Research Use only

Handling

Format: Liquid

Concentration: 0.5 mg/mL

Buffer: PBS with 0.05 % sodium azide and 50 % glycerol, PH7.4

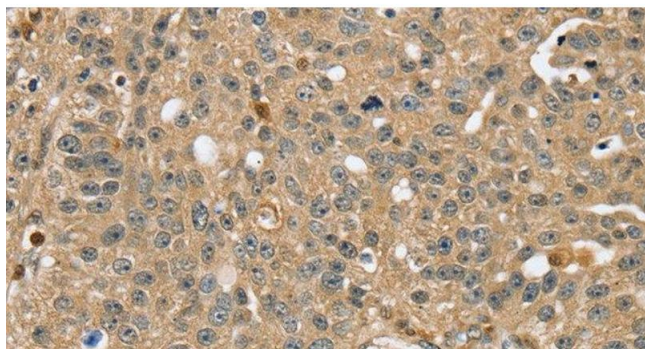
Preservative: Sodium azide

Precaution of Use: This product contains Sodium azide: a POISONOUS AND HAZARDOUS SUBSTANCE which should be handled by trained staff only.

Storage: -20 °C

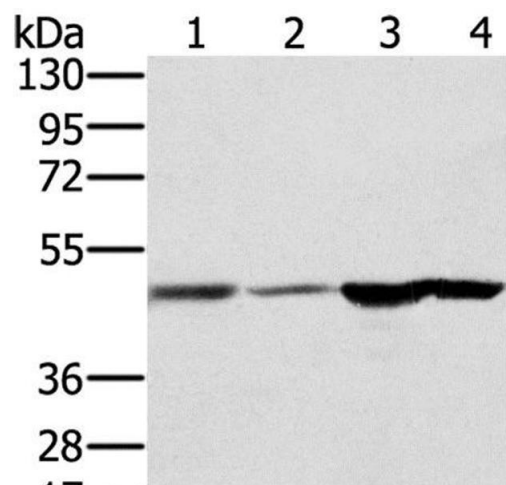
Storage Comment: Store at -20°C. Avoid freeze / thaw cycles.

Images



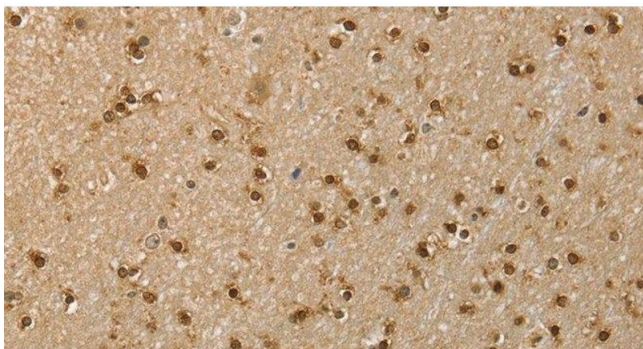
Immunohistochemistry (Paraffin-embedded Sections)

Image 1. Immunohistochemistry of paraffin-embedded Human breast cancer using RNH1 Polyclonal Antibody at dilution of 1:40



Western Blotting

Image 2. Western Blot analysis of Human fetal brain and normal liver tissue, Human normal kidney tissue and hepg2 cell using RNH1 Polyclonal Antibody at dilution of 1:400



Immunohistochemistry (Paraffin-embedded Sections)

Image 3. Immunohistochemistry of paraffin-embedded Human brain using RNH1 Polyclonal Antibody at dilution of 1:40