



[Go to Product page](#)

Datasheet for ABIN7237669 anti-RPS6KA1 antibody

3 Images

Overview

Quantity:	200 µL
Target:	RPS6KA1
Reactivity:	Human, Mouse, Rat
Host:	Rabbit
Clonality:	Polyclonal
Conjugate:	This RPS6KA1 antibody is un-conjugated
Application:	Western Blotting (WB), ELISA, Immunohistochemistry (IHC)

Product Details

Immunogen:	Recombinant protein of human RPS6KA1
Isotype:	IgG
Characteristics:	Polyclonal Antibody
Purification:	Affinity purification

Target Details

Target:	RPS6KA1
Alternative Name:	RPS6KA1 (RPS6KA1 Products)
Background:	This gene encodes a member of the RSK (ribosomal S6 kinase) family of serine/threonine kinases. This kinase contains 2 nonidentical kinase catalytic domains and phosphorylates various substrates, including members of the mitogen-activated kinase (MAPK) signalling pathway. The activity of this protein has been implicated in controlling cell growth and

Target Details

differentiation. Alternate transcriptional splice variants, encoding different isoforms, have been characterized.

Molecular Weight: 83 kDa

UniProt: [Q15418](#)

Pathways: [MAPK Signaling](#), [Neurotrophin Signaling Pathway](#), [Activation of Innate immune Response](#), [Toll-Like Receptors Cascades](#)

Application Details

Application Notes: WB 1:500-1:2000, IHC 1:25-1:100

Restrictions: For Research Use only

Handling

Format: Liquid

Concentration: 0.4 mg/mL

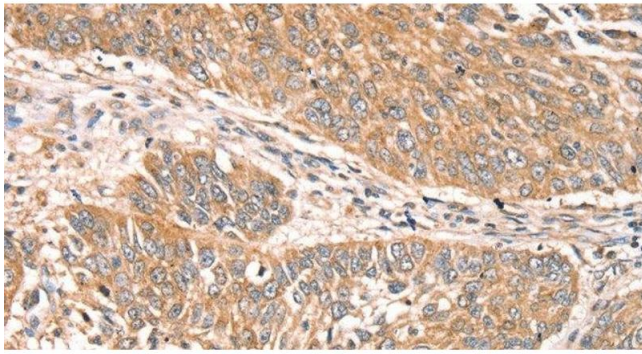
Buffer: PBS with 0.05 % sodium azide and 50 % glycerol, PH7.4

Preservative: Sodium azide

Precaution of Use: This product contains Sodium azide: a POISONOUS AND HAZARDOUS SUBSTANCE which should be handled by trained staff only.

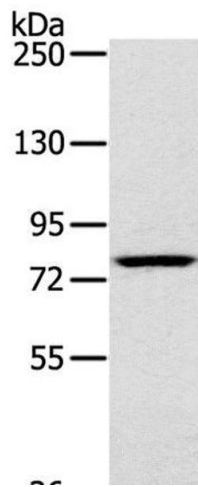
Storage: -20 °C

Storage Comment: Store at -20°C. Avoid freeze / thaw cycles.



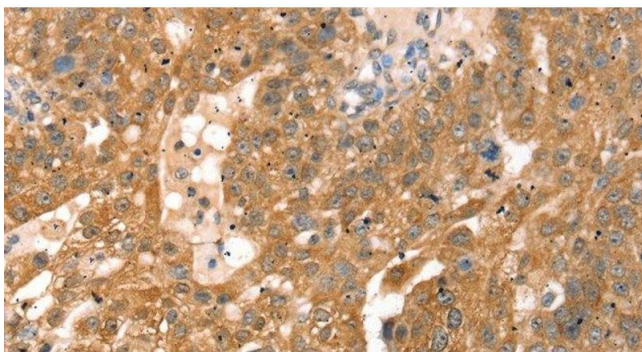
Immunohistochemistry (Paraffin-embedded Sections)

Image 1. Immunohistochemistry of paraffin-embedded Human lung cancer using RPS6KA1 Polyclonal Antibody at dilution of 1:30



Western Blotting

Image 2. Western Blot analysis of K562 cell using RPS6KA1 Polyclonal Antibody at dilution of 1:400



Immunohistochemistry (Paraffin-embedded Sections)

Image 3. Immunohistochemistry of paraffin-embedded Human breast cancer using RPS6KA1 Polyclonal Antibody at dilution of 1:30