

Datasheet for ABIN7237677

**anti-S100A6 antibody**[Go to Product page](#)**1** Image

## Overview

Quantity:	200 µL
Target:	S100A6
Reactivity:	Human, Mouse, Rat
Host:	Rabbit
Clonality:	Polyclonal
Conjugate:	This S100A6 antibody is un-conjugated
Application:	Western Blotting (WB), ELISA

## Product Details

Immunogen:	Recombinant protein of human S100A6
Isotype:	IgG
Characteristics:	Polyclonal Antibody
Purification:	Affinity purification

## Target Details

Target:	S100A6
Alternative Name:	S100A6 ( <a href="#">S100A6 Products</a> )
Background:	The protein encoded by this gene is a member of the S100 family of proteins containing 2 EF-hand calcium-binding motifs. S100 proteins are localized in the cytoplasm and/or nucleus of a wide range of cells, and involved in the regulation of a number of cellular processes such as cell cycle progression and differentiation. S100 genes include at least 13 members which are

Target Details

	located as a cluster on chromosome 1q21.
Molecular Weight:	10 kDa
UniProt:	<a href="#">P06703</a>
Pathways:	<a href="#">S100 Proteins</a>

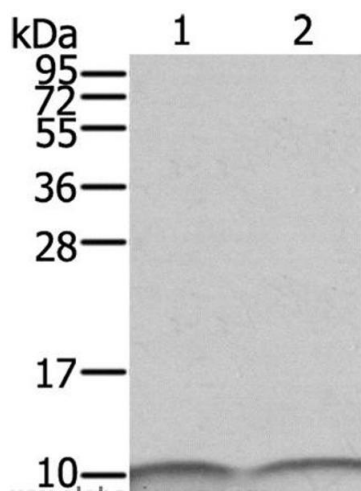
Application Details

Application Notes:	WB 1:500-1:2000
Restrictions:	For Research Use only

Handling

Format:	Liquid
Concentration:	1.4 mg/mL
Buffer:	PBS with 0.05 % sodium azide and 50 % glycerol, PH7.4
Preservative:	Sodium azide
Precaution of Use:	This product contains Sodium azide: a POISONOUS AND HAZARDOUS SUBSTANCE which should be handled by trained staff only.
Storage:	-20 °C
Storage Comment:	Store at -20°C. Avoid freeze / thaw cycles.

Images



**Western Blotting**

**Image 1.** Western Blot analysis of SKOV3 and A431 cell using S100A6 Polyclonal Antibody at dilution of 1:550