

Datasheet for ABIN7237685

**anti-SH3KBP1 antibody**[Go to Product page](#)**2** Images

## Overview

Quantity:	200 µL
Target:	SH3KBP1
Reactivity:	Human, Mouse, Rat
Host:	Rabbit
Clonality:	Polyclonal
Conjugate:	This SH3KBP1 antibody is un-conjugated
Application:	Immunohistochemistry (IHC), ELISA

## Product Details

Immunogen:	Recombinant protein of human SH3KBP1
Isotype:	IgG
Characteristics:	Polyclonal Antibody
Purification:	Affinity purification

## Target Details

Target:	SH3KBP1
Alternative Name:	SH3KBP1 ( <a href="#">SH3KBP1 Products</a> )
Background:	This gene encodes an adapter protein that contains three N-terminal Src homology domains, a proline rich region and a C-terminal coiled-coil domain. The encoded protein facilitates protein-protein interactions and has been implicated in numerous cellular processes including apoptosis, cytoskeletal rearrangement, cell adhesion and in the regulation of clathrin-dependent

## Target Details

endocytosis. Alternate splicing results in multiple transcript variants.

UniProt: [Q96B97](#)

Pathways: [EGFR Signaling Pathway](#), [EGFR Downregulation](#)

## Application Details

Application Notes: IHC 1:30-1:150

Restrictions: For Research Use only

## Handling

Format: Liquid

Concentration: 0.6 mg/mL

Buffer: PBS with 0.05 % sodium azide and 50 % glycerol, PH7.4

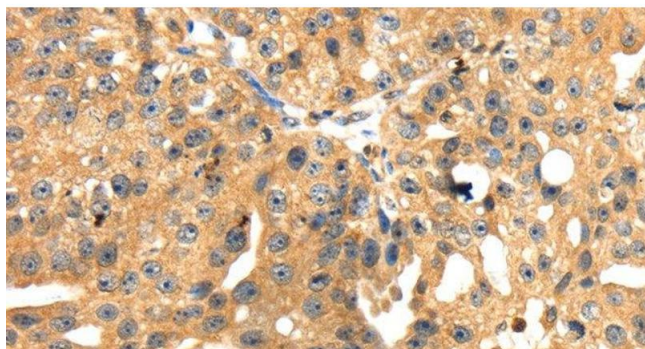
Preservative: Sodium azide

Precaution of Use: This product contains Sodium azide: a POISONOUS AND HAZARDOUS SUBSTANCE which should be handled by trained staff only.

Storage: -20 °C

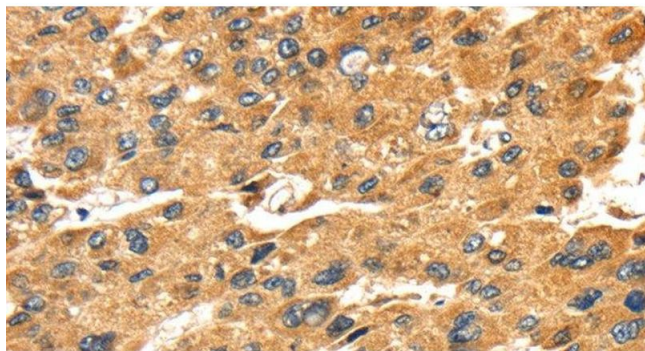
Storage Comment: Store at -20°C. Avoid freeze / thaw cycles.

## Images



### Immunohistochemistry (Paraffin-embedded Sections)

**Image 1.** Immunohistochemistry of paraffin-embedded Human breast cancer tissue using SH3KBP1 Polyclonal Antibody at dilution 1:45



#### Immunohistochemistry (Paraffin-embedded Sections)

**Image 2.** Immunohistochemistry of paraffin-embedded Human liver cancer tissue using SH3KBP1 Polyclonal Antibody at dilution 1:45