

Datasheet for ABIN7237716

**anti-SRGN antibody****2** Images[Go to Product page](#)

## Overview

Quantity:	200 µL
Target:	SRGN
Reactivity:	Human
Host:	Rabbit
Clonality:	Polyclonal
Conjugate:	This SRGN antibody is un-conjugated
Application:	Immunohistochemistry (IHC), ELISA

## Product Details

Immunogen:	Recombinant protein of human SRGN
Isotype:	IgG
Characteristics:	Polyclonal Antibody
Purification:	Affinity purification

## Target Details

Target:	SRGN
Alternative Name:	SRGN ( <a href="#">SRGN Products</a> )
Background:	<p>This gene encodes a protein best known as a hematopoietic cell granule proteoglycan. Proteoglycans stored in the secretory granules of many hematopoietic cells also contain a protease-resistant peptide core, which may be important for neutralizing hydrolytic enzymes.</p> <p>This encoded protein was found to be associated with the macromolecular complex of</p>

## Target Details

granzymes and perforin, which may serve as a mediator of granule-mediated apoptosis.

UniProt: [P10124](#)

Pathways: [Maintenance of Protein Location](#)

## Application Details

Application Notes: IHC 1:25-1:100

Restrictions: For Research Use only

## Handling

Format: Liquid

Concentration: 0.3 mg/mL

Buffer: PBS with 0.05 % sodium azide and 50 % glycerol, PH7.4

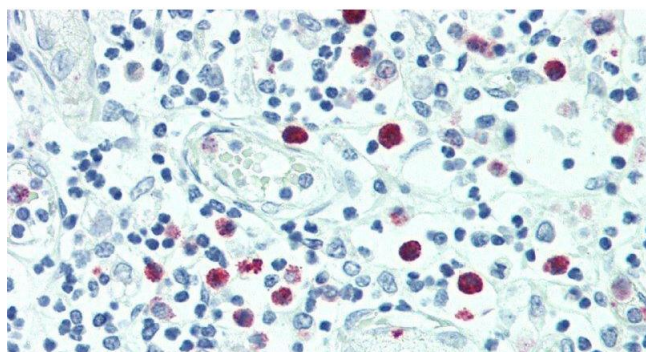
Preservative: Sodium azide

Precaution of Use: This product contains Sodium azide: a POISONOUS AND HAZARDOUS SUBSTANCE which should be handled by trained staff only.

Storage: -20 °C

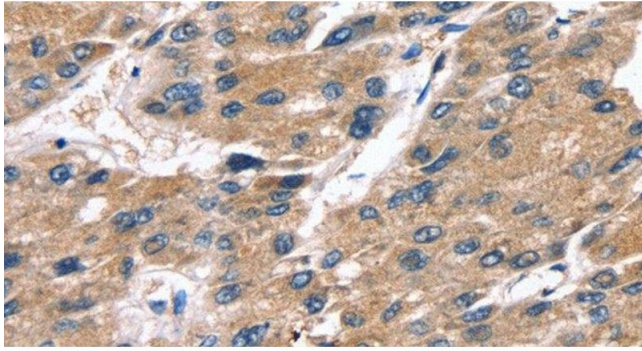
Storage Comment: Store at -20°C. Avoid freeze / thaw cycles.

## Images



### Immunohistochemistry (Paraffin-embedded Sections)

**Image 1.** Immunohistochemistry of paraffin-embedded Thymus tissue using SRGN Polyclonal Antibody at dilution of 1:100.



#### Immunohistochemistry (Paraffin-embedded Sections)

**Image 2.** Immunohistochemistry of paraffin-embedded Human liver cancer tissue using SRGN Polyclonal Antibody at dilution 1:25