

Datasheet for ABIN7237739

**anti-SULT2A1 antibody**[Go to Product page](#)**1** Image

## Overview

Quantity:	200 µL
Target:	SULT2A1
Reactivity:	Human
Host:	Rabbit
Clonality:	Polyclonal
Conjugate:	This SULT2A1 antibody is un-conjugated
Application:	Western Blotting (WB), ELISA

## Product Details

Immunogen:	Recombinant protein of human SULT2A1
Isotype:	IgG
Characteristics:	Polyclonal Antibody
Purification:	Affinity purification

## Target Details

Target:	SULT2A1
Alternative Name:	SULT2A1 ( <a href="#">SULT2A1 Products</a> )
Background:	This gene encodes a member of the sulfotransferase family. Sulfotransferases aid in the metabolism of drugs and endogenous compounds by converting these substances into more hydrophilic water-soluble sulfate conjugates that can be easily excreted. This protein catalyzes the sulfation of steroids and bile acids in the liver and adrenal glands, and may have a role in the

## Target Details

	inherited adrenal androgen excess in women with polycystic ovary syndrome.
Molecular Weight:	34 kDa
UniProt:	<a href="#">Q06520</a>
Pathways:	<a href="#">Steroid Hormone Biosynthesis</a> , <a href="#">Regulation of Lipid Metabolism by PPARalpha</a> , <a href="#">Monocarboxylic Acid Catabolic Process</a>

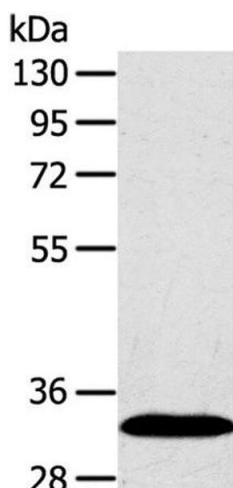
## Application Details

Application Notes:	WB 1:500-1:2000
Restrictions:	For Research Use only

## Handling

Format:	Liquid
Concentration:	0.3 mg/mL
Buffer:	PBS with 0.05 % sodium azide and 50 % glycerol, PH7.4
Preservative:	Sodium azide
Precaution of Use:	This product contains Sodium azide: a POISONOUS AND HAZARDOUS SUBSTANCE which should be handled by trained staff only.
Storage:	-20 °C
Storage Comment:	Store at -20°C. Avoid freeze / thaw cycles.

## Images



### Western Blotting

**Image 1.** Western Blot analysis of Human fetal liver tissue using SULT2A1 Polyclonal Antibody at dilution of 1:650