



[Go to Product page](#)

Datasheet for ABIN7237778

anti-Serotonin Receptor 1A antibody

2 Images

Overview

Quantity:	200 µL
Target:	Serotonin Receptor 1A (HTR1A)
Reactivity:	Human, Rat, Mouse
Host:	Rabbit
Clonality:	Polyclonal
Conjugate:	This Serotonin Receptor 1A antibody is un-conjugated
Application:	Western Blotting (WB), ELISA, Immunohistochemistry (IHC)

Product Details

Immunogen:	Synthetic peptide of human HTR1A
Isotype:	IgG
Characteristics:	Polyclonal Antibody
Purification:	Affinity purification

Target Details

Target:	Serotonin Receptor 1A (HTR1A)
Alternative Name:	HTR1A (HTR1A Products)
Background:	This gene encodes a G protein-coupled receptor for 5-hydroxytryptamine (serotonin), and belongs to the 5-hydroxytryptamine receptor subfamily. Serotonin has been implicated in a number of physiologic processes and pathologic conditions. Inactivation of this gene in mice results in behavior consistent with an increased anxiety and stress response. Mutation in the

Target Details

promoter of this gene has been associated with menstrual cycle-dependent periodic fevers

Molecular Weight: 46 kDa

NCBI Accession: [NP_000515](#)

UniProt: [P08908](#)

Pathways: [JAK-STAT Signaling](#), [Synaptic Membrane](#), [Feeding Behaviour](#)

Application Details

Application Notes: WB 1:1000-1:5000 IHC 1:50-100

Restrictions: For Research Use only

Handling

Format: Liquid

Concentration: 0.6 mg/mL

Buffer: PBS with 0.05 % sodium azide and 50 % glycerol, PH7.4

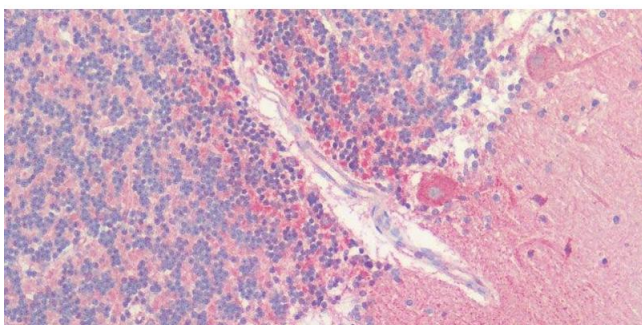
Preservative: Sodium azide

Precaution of Use: This product contains Sodium azide: a POISONOUS AND HAZARDOUS SUBSTANCE which should be handled by trained staff only.

Storage: -20 °C

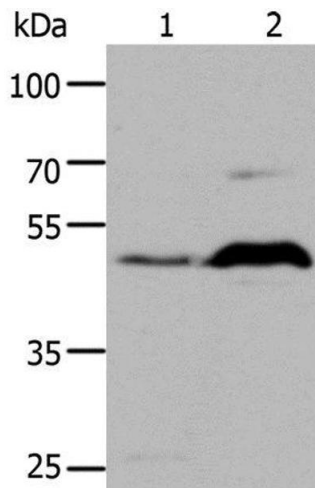
Storage Comment: Store at -20°C. Avoid freeze / thaw cycles.

Images



Immunohistochemistry (Paraffin-embedded Sections)

Image 1. Immunohistochemistry of paraffin-embedded Human cerebellum using HTR1A Polyclonal Antibody at dilution of 1:60.



Western Blotting

Image 2. Western Blot analysis of HepG2 cell and Mouse brain tissue using HTR1A Polyclonal Antibody at dilution of 1:1000