

Datasheet for ABIN7237797

**anti-ADRB3 antibody****1** Image[Go to Product page](#)

## Overview

Quantity:	200 µL
Target:	ADRB3
Reactivity:	Human
Host:	Rabbit
Clonality:	Polyclonal
Conjugate:	This ADRB3 antibody is un-conjugated
Application:	ELISA, Immunohistochemistry (IHC)

## Product Details

Immunogen:	Synthetic peptide of human ADRB3
Isotype:	IgG
Characteristics:	Polyclonal Antibody
Purification:	Affinity purification

## Target Details

Target:	ADRB3
Alternative Name:	ADRB3 ( <a href="#">ADRB3 Products</a> )
Background:	The protein encoded by this gene belongs to the family of beta adrenergic receptors, which mediate catecholamine-induced activation of adenylate cyclase through the action of G proteins. This receptor is located mainly in the adipose tissue and is involved in the regulation of lipolysis and thermogenesis.

## Target Details

NCBI Accession:	<a href="#">NP_000016</a>
UniProt:	<a href="#">P13945</a>
Pathways:	<a href="#">cAMP Metabolic Process</a> , <a href="#">Regulation of G-Protein Coupled Receptor Protein Signaling</a> , <a href="#">Feeding Behaviour</a> , <a href="#">Brown Fat Cell Differentiation</a>

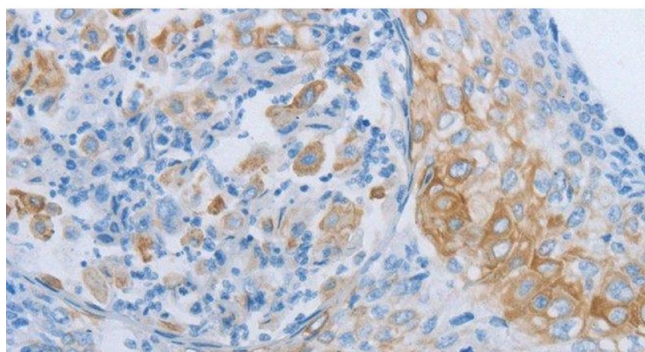
## Application Details

Application Notes:	IHC 1:50-1:100
Restrictions:	For Research Use only

## Handling

Format:	Liquid
Concentration:	0.7 mg/mL
Buffer:	PBS with 0.05 % sodium azide and 50 % glycerol, PH7.4
Preservative:	Sodium azide
Precaution of Use:	This product contains Sodium azide: a POISONOUS AND HAZARDOUS SUBSTANCE which should be handled by trained staff only.
Storage:	-20 °C
Storage Comment:	Store at -20°C. Avoid freeze / thaw cycles.

## Images



### Immunohistochemistry (Paraffin-embedded Sections)

**Image 1.** Immunohistochemistry of paraffin-embedded Human cervical cancer tissue using ADRB3 Polyclonal Antibody at dilution 1:60