

Datasheet for ABIN7237805
anti-RAB25 antibody



[Go to Product page](#)

2 Images

Overview

| | |
|--------------|--------------------------------------|
| Quantity: | 200 µL |
| Target: | RAB25 |
| Reactivity: | Human, Mouse |
| Host: | Rabbit |
| Clonality: | Polyclonal |
| Conjugate: | This RAB25 antibody is un-conjugated |
| Application: | ELISA, Immunohistochemistry (IHC) |

Product Details

| | |
|------------------|----------------------------------|
| Immunogen: | Synthetic peptide of human RAB25 |
| Isotype: | IgG |
| Characteristics: | Polyclonal Antibody |
| Purification: | Affinity purification |

Target Details

| | |
|-------------------|---|
| Target: | RAB25 |
| Alternative Name: | RAB25 (RAB25 Products) |
| Background: | RAB proteins, such as RAB25, are members of the RAS superfamily of small GTPases that are involved in membrane trafficking. Members of the RAB11 subfamily, including RAB25, control the return of internalized membrane-associated moieties to the cell surface. |

Target Details

NCBI Accession: [NP_065120](#)

UniProt: [P57735](#)

Application Details

Application Notes: IHC 1:25-1:100

Restrictions: For Research Use only

Handling

Format: Liquid

Concentration: 0.3 mg/mL

Buffer: PBS with 0.05 % sodium azide and 50 % glycerol, PH7.4

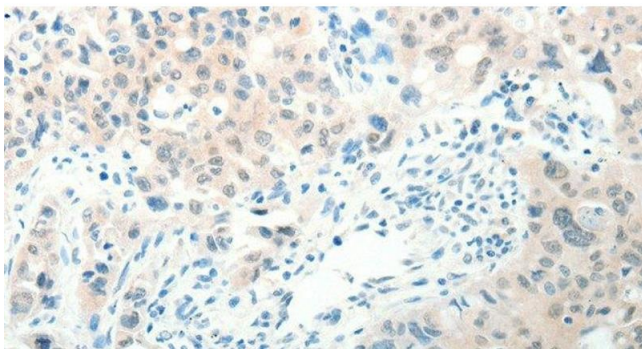
Preservative: Sodium azide

Precaution of Use: This product contains Sodium azide: a POISONOUS AND HAZARDOUS SUBSTANCE which should be handled by trained staff only.

Storage: -20 °C

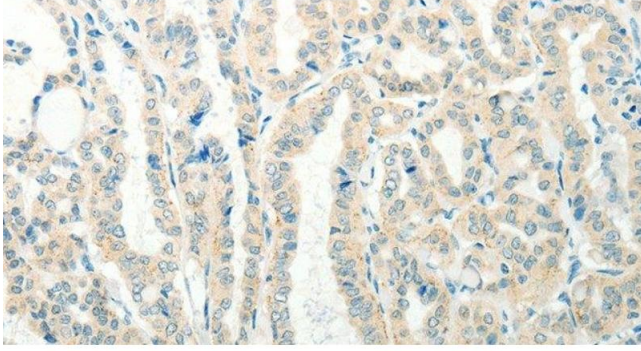
Storage Comment: Store at -20°C. Avoid freeze / thaw cycles.

Images



Immunohistochemistry (Paraffin-embedded Sections)

Image 1. Immunohistochemistry of paraffin-embedded Human lung cancer tissue using RAB25 Polyclonal Antibody at dilution 1:50



Immunohistochemistry (Paraffin-embedded Sections)

Image 2. Immunohistochemistry of paraffin-embedded Human thyroid cancer tissue using RAB25 Polyclonal Antibody at dilution 1:50