

Datasheet for ABIN7237816

anti-RAB41 antibody**2** Images[Go to Product page](#)

Overview

Quantity:	200 µL
Target:	RAB41
Reactivity:	Human
Host:	Rabbit
Clonality:	Polyclonal
Conjugate:	This RAB41 antibody is un-conjugated
Application:	ELISA, Immunohistochemistry (IHC)

Product Details

Immunogen:	Synthetic peptide of human RAB41
Isotype:	IgG
Characteristics:	Polyclonal Antibody
Purification:	Affinity purification

Target Details

Target:	RAB41
Alternative Name:	RAB41 (RAB41 Products)
Background:	This gene encodes a small GTP-binding protein that belongs to the largest family within the Ras superfamily. These proteins function as regulators of membrane trafficking. They cycle between inactive GDP-bound and activated GTP-bound states, which is controlled by GTP hydrolysis-activating proteins (GAPs). This family member can be activated by the GAP protein

Target Details

RN-Tre, and it is localized to the Golgi complex.

NCBI Accession: [NP_001027898](#)

UniProt: [Q5JT25](#)

Application Details

Application Notes: IHC 1:100-1:200

Restrictions: For Research Use only

Handling

Format: Liquid

Concentration: 0.2 mg/mL

Buffer: PBS with 0.05 % sodium azide and 50 % glycerol, PH7.4

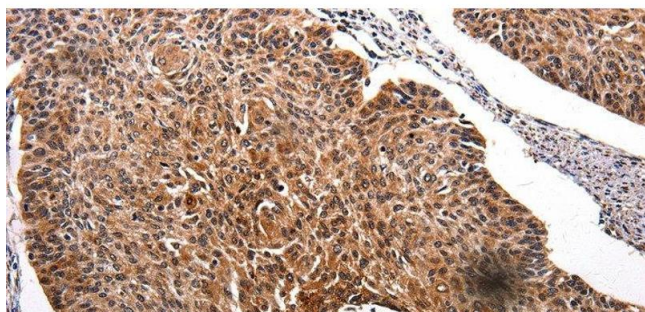
Preservative: Sodium azide

Precaution of Use: This product contains Sodium azide: a POISONOUS AND HAZARDOUS SUBSTANCE which should be handled by trained staff only.

Storage: -20 °C

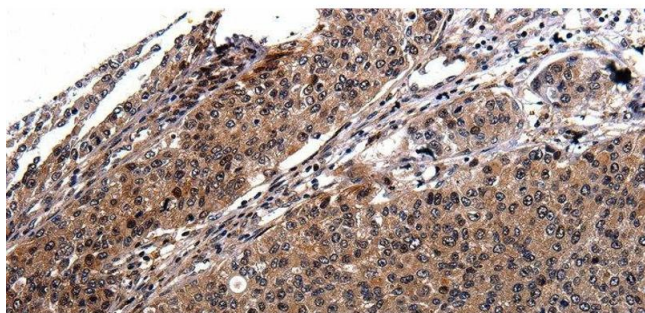
Storage Comment: Store at -20°C. Avoid freeze / thaw cycles.

Images



Immunohistochemistry (Paraffin-embedded Sections)

Image 1. Immunohistochemistry of paraffin-embedded Human renal cancer tissue using RAB41 Polyclonal Antibody at dilution 1:100



Immunohistochemistry (Paraffin-embedded Sections)

Image 2. Immunohistochemistry of paraffin-embedded Human cervical cancer tissue using RAB41 Polyclonal Antibody at dilution 1:100