

Datasheet for ABIN7237839

anti-PYGB antibody[Go to Product page](#)**1** Image

Overview

Quantity:	200 µL
Target:	PYGB (GPBB)
Reactivity:	Human, Mouse, Rat
Host:	Rabbit
Clonality:	Polyclonal
Conjugate:	This PYGB antibody is un-conjugated
Application:	Western Blotting (WB), ELISA

Product Details

Immunogen:	Synthetic peptide of human PYGB
Isotype:	IgG
Characteristics:	Polyclonal Antibody
Purification:	Affinity purification

Target Details

Target:	PYGB (GPBB)
Alternative Name:	PYGB (GPBB Products)
Background:	The protein encoded by this gene is a glycogen phosphorylase found predominantly in the brain. The encoded protein forms homodimers which can associate into homotetramers, the enzymatically active form of glycogen phosphorylase. The activity of this enzyme is positively regulated by AMP and negatively regulated by ATP, ADP, and glucose-6-phosphate. This

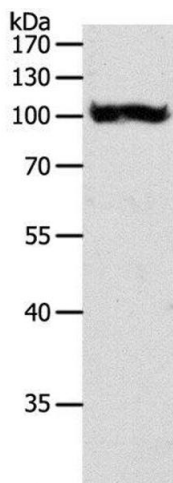
Target Details

	enzyme catalyzes the rate-determining step in glycogen degradation
Molecular Weight:	97 kDa
NCBI Accession:	NP_002853
UniProt:	P11216
Pathways:	Cellular Glucan Metabolic Process

Application Details

Application Notes:	WB 1:500-1:2000
Restrictions:	For Research Use only
Handling	
Format:	Liquid
Concentration:	0.4 mg/mL
Buffer:	PBS with 0.05 % sodium azide and 50 % glycerol, PH7.4
Preservative:	Sodium azide
Precaution of Use:	This product contains Sodium azide: a POISONOUS AND HAZARDOUS SUBSTANCE which should be handled by trained staff only.
Storage:	-20 °C
Storage Comment:	Store at -20°C. Avoid freeze / thaw cycles.

Images



Western Blotting

Image 1. Western Blot analysis of HT-29 cell using PYGB Polyclonal Antibody at dilution of 1:550