



[Go to Product page](#)

## Datasheet for ABIN7237928 anti-DPYSL4 antibody

### 1 Image

#### Overview

Quantity:	200 µL
Target:	DPYSL4
Reactivity:	Human, Mouse, Rat
Host:	Rabbit
Clonality:	Polyclonal
Conjugate:	This DPYSL4 antibody is un-conjugated
Application:	Western Blotting (WB), ELISA

#### Product Details

Immunogen:	Synthetic peptide of human DPYSL4
Isotype:	IgG
Characteristics:	Polyclonal Antibody
Purification:	Affinity purification

#### Target Details

Target:	DPYSL4
Alternative Name:	CRMP3 ( <a href="#">DPYSL4 Products</a> )
Background:	Collapsin response mediator protein 3 is an enzyme that in humans is encoded by the CRMP3 gene. It is necessary for signaling by class 3 semaphorins and subsequent remodeling of the cytoskeleton. And plays a role in axon guidance, neuronal growth cone collapse and cell migration. Homotetramer, and heterotetramer with CRMP1, DPYSL2, DPYSL3 or DPYSL5.

## Target Details

Interacts with PLEXA1. Phosphorylated upon DNA damage, probably by ATM or ATR.

Molecular Weight: 62 kDa

NCBI Accession: [NP\\_006417](#)

UniProt: [O14531](#)

## Application Details

Application Notes: WB 1:500-1:1000

Restrictions: For Research Use only

## Handling

Format: Liquid

Concentration: 0.4 mg/mL

Buffer: PBS with 0.05 % sodium azide and 50 % glycerol, PH7.4

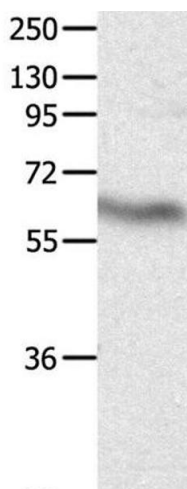
Preservative: Sodium azide

Precaution of Use: This product contains Sodium azide: a POISONOUS AND HAZARDOUS SUBSTANCE which should be handled by trained staff only.

Storage: -20 °C

Storage Comment: Store at -20°C. Avoid freeze / thaw cycles.

## Images



### Western Blotting

**Image 1.** Western Blot analysis of Human fetal brain tissue using CRMP3 Polyclonal Antibody at dilution of 1:500