

Datasheet for ABIN7237952

anti-SLC6A3 antibody**2** Images[Go to Product page](#)

Overview

Quantity:	200 µL
Target:	SLC6A3
Reactivity:	Human, Rat, Mouse
Host:	Rabbit
Clonality:	Polyclonal
Conjugate:	This SLC6A3 antibody is un-conjugated
Application:	ELISA, Immunohistochemistry (IHC)

Product Details

Immunogen:	Synthetic peptide of human SLC6A3
Isotype:	IgG
Characteristics:	Polyclonal Antibody
Purification:	Affinity purification

Target Details

Target:	SLC6A3
Alternative Name:	SLC6A3 (SLC6A3 Products)
Background:	This gene encodes a dopamine transporter which is a member of the sodium- and chloride-dependent neurotransmitter transporter family. The 3' UTR of this gene contains a 40 bp tandem repeat, referred to as a variable number tandem repeat or VNTR, which can be present in 3 to 11 copies. Variation in the number of repeats is associated with idiopathic epilepsy,

Target Details

attention-deficit hyperactivity disorder, dependence on alcohol and cocaine, susceptibility to Parkinson disease and protection against nicotine dependence.

NCBI Accession: [NP_001035](#)

UniProt: [Q01959](#)

Pathways: [Dopaminergic Neurogenesis](#)

Application Details

Application Notes: IHC 1:100-1:300

Restrictions: For Research Use only

Handling

Format: Liquid

Concentration: 0.8 mg/mL

Buffer: PBS with 0.05 % sodium azide and 50 % glycerol, PH7.4

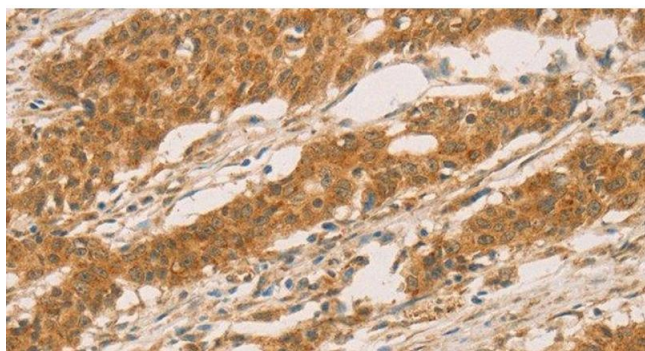
Preservative: Sodium azide

Precaution of Use: This product contains Sodium azide: a POISONOUS AND HAZARDOUS SUBSTANCE which should be handled by trained staff only.

Storage: -20 °C

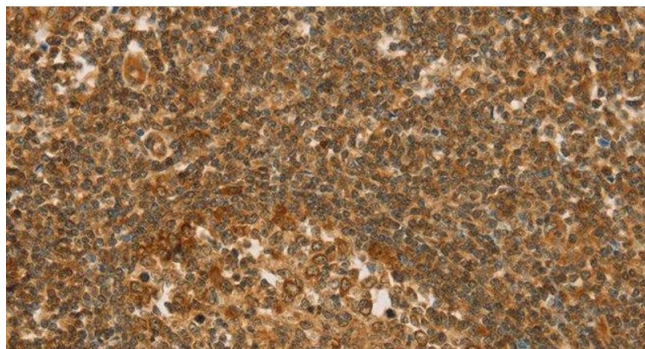
Storage Comment: Store at -20°C. Avoid freeze / thaw cycles.

Images



Immunohistochemistry (Paraffin-embedded Sections)

Image 1. Immunohistochemistry of paraffin-embedded Human gastric cancer tissue using SLC6A3 Polyclonal Antibody at dilution 1:50



Immunohistochemistry (Paraffin-embedded Sections)

Image 2. Immunohistochemistry of paraffin-embedded Human tonsil tissue using SLC6A3 Polyclonal Antibody at dilution 1:50