

Datasheet for ABIN7237958  
**anti-alpha Defensin 1 antibody**[Go to Product page](#)

## 1 Image

## Overview

Quantity:	200 µL
Target:	alpha Defensin 1 (DEFA1)
Reactivity:	Human
Host:	Rabbit
Clonality:	Polyclonal
Conjugate:	This alpha Defensin 1 antibody is un-conjugated
Application:	Western Blotting (WB), ELISA

## Product Details

Immunogen:	Synthetic peptide of human DEFA1
Isotype:	IgG
Characteristics:	Polyclonal Antibody
Purification:	Affinity purification

## Target Details

Target:	alpha Defensin 1 (DEFA1)
Alternative Name:	DEFA1 ( <a href="#">DEFA1 Products</a> )
Background:	<p>Defensins are a family of microbicidal and cytotoxic peptides thought to be involved in host defense. They are abundant in the granules of neutrophils and also found in the epithelia of mucosal surfaces such as those of the intestine, respiratory tract, urinary tract, and vagina.</p> <p>Members of the defensin family are highly similar in protein sequence and distinguished by a</p>

## Target Details

conserved cysteine motif. The protein encoded by this gene, defensin, alpha 1, is found in the microbicidal granules of neutrophils and likely plays a role in phagocyte-mediated host defense. Several alpha defensin genes are clustered on chromosome 8. This gene differs from defensin, alpha 3 by only one amino acid. This gene and the gene encoding defensin, alpha 3 are both subject to copy number variation.

Molecular Weight: 10 kDa

NCBI Accession: [NP\\_004075](#)

UniProt: [P59665](#)

Pathways: [Cellular Response to Molecule of Bacterial Origin](#)

## Application Details

Application Notes: WB 1:500-1:1000

Restrictions: For Research Use only

## Handling

Format: Liquid

Concentration: 0.4 mg/mL

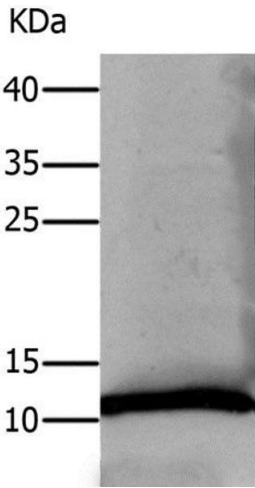
Buffer: PBS with 0.05 % sodium azide and 50 % glycerol, PH7.4

Preservative: Sodium azide

Precaution of Use: This product contains Sodium azide: a POISONOUS AND HAZARDOUS SUBSTANCE which should be handled by trained staff only.

Storage: -20 °C

Storage Comment: Store at -20°C. Avoid freeze / thaw cycles.



Western Blotting

**Image 1.** Western Blot analysis of Human lung tissue using DEFA1 Polyclonal Antibody at dilution of 1:550