

Datasheet for ABIN7237982
anti-SLC1A6 antibody



[Go to Product page](#)

3 Images

Overview

Quantity:	200 µL
Target:	SLC1A6
Reactivity:	Human, Mouse, Rat
Host:	Rabbit
Clonality:	Polyclonal
Conjugate:	This SLC1A6 antibody is un-conjugated
Application:	Western Blotting (WB), ELISA, Immunohistochemistry (IHC)

Product Details

Immunogen:	Synthetic peptide of human SLC1A6
Isotype:	IgG
Characteristics:	Polyclonal Antibody
Purification:	Affinity purification

Target Details

Target:	SLC1A6
Alternative Name:	SLC1A6 (SLC1A6 Products)
Background:	Excitatory amino-acid transporter 4 (EAAT4) is a protein that in humans is encoded by the SLC1A6 gene. It is a member of the high-affinity glutamate and neutral amino acid-transporter family. It transports L-glutamate and also L- and D-aspartate predominantly in the cerebellar cortex. Genetic polymorphism in the SLC1A6 gene is suggested to be referred to glutamatergic

Target Details

dysfunction in schizophrenia pathogenesis.

Molecular Weight: 62 kDa

NCBI Accession: [NP_005062](#)

UniProt: [P48664](#)

Pathways: [Dicarboxylic Acid Transport](#)

Application Details

Application Notes: WB 1:500-1:1000, IHC 1:25-1:100

Restrictions: For Research Use only

Handling

Format: Liquid

Concentration: 0.2 mg/mL

Buffer: PBS with 0.05 % sodium azide and 50 % glycerol, PH7.4

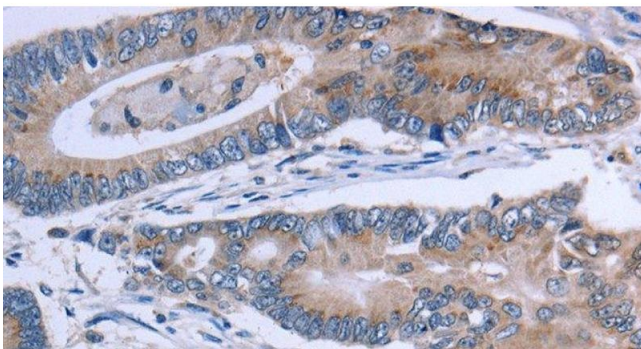
Preservative: Sodium azide

Precaution of Use: This product contains Sodium azide: a POISONOUS AND HAZARDOUS SUBSTANCE which should be handled by trained staff only.

Storage: -20 °C

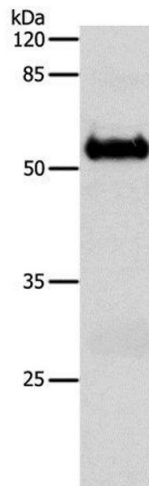
Storage Comment: Store at -20°C. Avoid freeze / thaw cycles.

Images



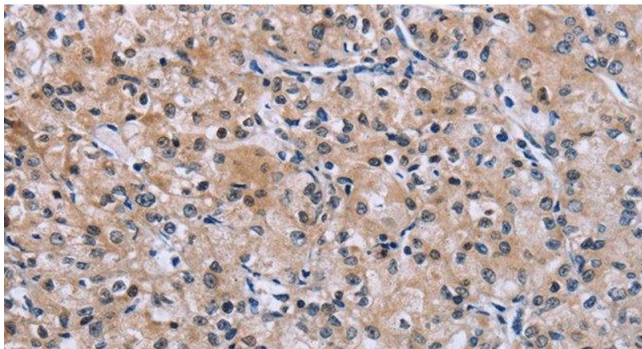
Immunohistochemistry (Paraffin-embedded Sections)

Image 1. Immunohistochemistry of paraffin-embedded Human colon cancer using SLC1A6 Polyclonal Antibody at dilution of 1:40



Western Blotting

Image 2. Western Blot analysis of Mouse brain tissue using SLC1A6 Polyclonal Antibody at dilution of 1:600



Immunohistochemistry (Paraffin-embedded Sections)

Image 3. Immunohistochemistry of paraffin-embedded Human prostate cancer using SLC1A6 Polyclonal Antibody at dilution of 1:40