

Datasheet for ABIN7237991

**anti-ENPP3 antibody****1** Image[Go to Product page](#)

## Overview

Quantity:	200 µL
Target:	ENPP3
Reactivity:	Human, Rat, Mouse
Host:	Rabbit
Clonality:	Polyclonal
Conjugate:	This ENPP3 antibody is un-conjugated
Application:	ELISA, Immunohistochemistry (IHC)

## Product Details

Immunogen:	Synthetic peptide of human ENPP3
Isotype:	IgG
Characteristics:	Polyclonal Antibody
Purification:	Affinity purification

## Target Details

Target:	ENPP3
Alternative Name:	CD203c ( <a href="#">ENPP3 Products</a> )
Background:	The protein encoded by this gene belongs to a series of ectoenzymes that are involved in hydrolysis of extracellular nucleotides. These ectoenzymes possess ATPase and ATP pyrophosphatase activities and are type II transmembrane proteins. Expression of the related rat mRNA has been found in a subset of immature glial cells and in the alimentary tract. The

## Target Details

corresponding rat protein has been detected in the pancreas, small intestine, colon, and liver.  
The human mRNA is expressed in glioma cells, prostate, and uterus. Expression of the human protein has been detected in uterus, basophils, and mast cells.

NCBI Accession: [NP\\_005012](#)

UniProt: [O14638](#)

Pathways: [Regulation of Muscle Cell Differentiation](#), [Negative Regulation of Transporter Activity](#)

## Application Details

Application Notes: IHC 1:50-1:200

Restrictions: For Research Use only

## Handling

Format: Liquid

Concentration: 0.4 mg/mL

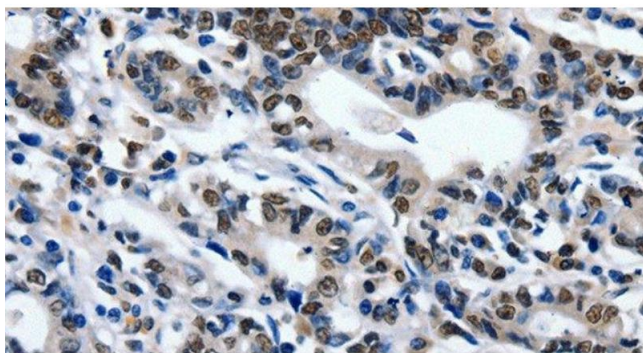
Buffer: PBS with 0.05 % sodium azide and 50 % glycerol, PH7.4

Preservative: Sodium azide

Precaution of Use: This product contains Sodium azide: a POISONOUS AND HAZARDOUS SUBSTANCE which should be handled by trained staff only.

Storage: -20 °C

Storage Comment: Store at -20°C. Avoid freeze / thaw cycles.



#### Immunohistochemistry (Paraffin-embedded Sections)

**Image 1.** Immunohistochemistry of paraffin-embedded Human gastric cancer tissue using CD203c Polyclonal Antibody at dilution 1:80