



[Go to Product page](#)

Datasheet for ABIN7238033

## anti-FOXB1 antibody

### 2 Images

#### Overview

Quantity:	200 µL
Target:	FOXB1
Reactivity:	Human, Mouse
Host:	Rabbit
Clonality:	Polyclonal
Conjugate:	This FOXB1 antibody is un-conjugated
Application:	ELISA, Immunohistochemistry (IHC)

#### Product Details

Immunogen:	Synthetic peptide of human FOXB1
Isotype:	IgG
Characteristics:	Polyclonal Antibody
Purification:	Affinity purification

#### Target Details

Target:	FOXB1
Alternative Name:	FOXB1 ( <a href="#">FOXB1 Products</a> )
Background:	The Forkhead-box (FOX) genes comprise a superfamily of at least 43 members that encode proteins which are involved in transcriptional regulation and may be associated with the pathogenesis of various cancers. FOXB1 (forkhead box B1), also known as FKH5 or HFKH-5, and FOXB2 (forkhead box B2) are members of the FOX family and each contain one forkhead

## Target Details

---

DNA-binding domain. Both FOXB1 and FOXB2 localize to the nucleus where they are thought to function as transcription factors that can bind to DNA via their forkhead domains. In mice, defects in the gene encoding FOXB1 are associated with retarded development of the central nervous system (CNS), suggesting that FOXB1 may play a role in CNS organization and function.

NCBI Accession: [NP\\_036314](#)

UniProt: [Q99853](#)

## Application Details

---

Application Notes: IHC 1:50-1:200

Restrictions: For Research Use only

## Handling

---

Format: Liquid

Concentration: 0.2 mg/mL

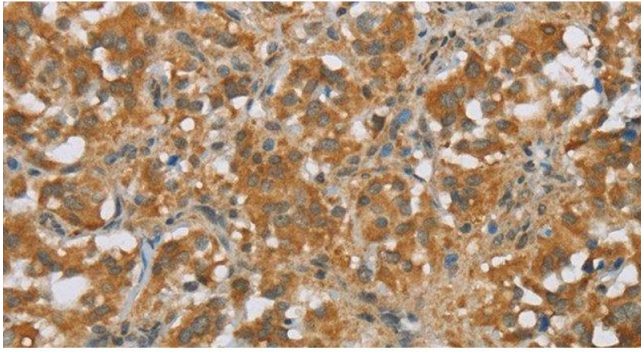
Buffer: PBS with 0.05 % sodium azide and 50 % glycerol, PH7.4

Preservative: Sodium azide

Precaution of Use: This product contains Sodium azide: a POISONOUS AND HAZARDOUS SUBSTANCE which should be handled by trained staff only.

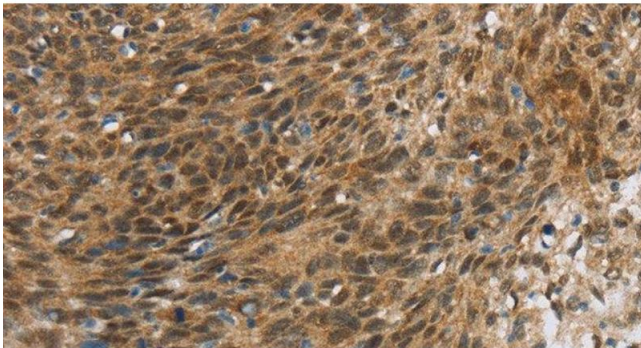
Storage: -20 °C

Storage Comment: Store at -20°C. Avoid freeze / thaw cycles.



#### Immunohistochemistry (Paraffin-embedded Sections)

**Image 1.** Immunohistochemistry of paraffin-embedded Human thyroid cancer tissue using FOXB1 Polyclonal Antibody at dilution 1:30



#### Immunohistochemistry (Paraffin-embedded Sections)

**Image 2.** Immunohistochemistry of paraffin-embedded Human cervical cancer tissue using FOXB1 Polyclonal Antibody at dilution 1:30