



[Go to Product page](#)

Datasheet for ABIN7238036

## anti-FOXC2 antibody

### 1 Image

#### Overview

Quantity:	200 µL
Target:	FOXC2
Reactivity:	Human, Mouse, Rat
Host:	Rabbit
Clonality:	Polyclonal
Conjugate:	This FOXC2 antibody is un-conjugated
Application:	Western Blotting (WB), ELISA

#### Product Details

Immunogen:	Synthetic peptide of human FOXC2
Isotype:	IgG
Characteristics:	Polyclonal Antibody
Purification:	Affinity purification

#### Target Details

Target:	FOXC2
Alternative Name:	FOXC2 ( <a href="#">FOXC2 Products</a> )
Background:	This gene belongs to the forkhead family of transcription factors which is characterized by a distinct DNA-binding forkhead domain. The specific function of this gene has not yet been determined, however, it may play a role in the development of mesenchymal tissues.

## Target Details

Molecular Weight: 54 kDa

NCBI Accession: [NP\\_005242](#)

UniProt: [Q99958](#)

## Application Details

Application Notes: WB 1:500-1:2000

Restrictions: For Research Use only

## Handling

Format: Liquid

Concentration: 0.3 mg/mL

Buffer: PBS with 0.05 % sodium azide and 50 % glycerol, PH7.4

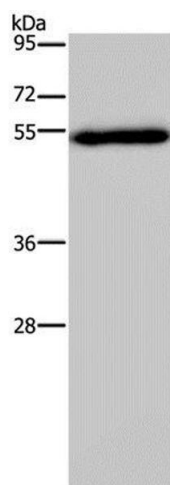
Preservative: Sodium azide

Precaution of Use: This product contains Sodium azide: a POISONOUS AND HAZARDOUS SUBSTANCE which should be handled by trained staff only.

Storage: -20 °C

Storage Comment: Store at -20°C. Avoid freeze / thaw cycles.

## Images



### Western Blotting

**Image 1.** Western Blot analysis of Human breast infiltrative duct tissue using FOXC2 Polyclonal Antibody at dilution of 1:833