



## Datasheet for ABIN7238048 **anti-IGF2BP1 antibody**



[Go to Product page](#)

### 1 Image

#### Overview

Quantity:	200 µL
Target:	IGF2BP1
Reactivity:	Human, Rat, Mouse
Host:	Rabbit
Clonality:	Polyclonal
Conjugate:	This IGF2BP1 antibody is un-conjugated
Application:	Western Blotting (WB), ELISA

#### Product Details

Immunogen:	Synthetic peptide of human IGF2BP1
Isotype:	IgG
Characteristics:	Polyclonal Antibody
Purification:	Affinity purification

#### Target Details

Target:	IGF2BP1
Alternative Name:	IGF2BP1 ( <a href="#">IGF2BP1 Products</a> )
Background:	This gene encodes a member of the insulin-like growth factor 2 mRNA-binding protein family. The protein encoded by this gene contains four K homology domains and two RNA recognition motifs. It functions by binding to the mRNAs of certain genes, including insulin-like growth factor 2, beta-actin and beta-transducin repeat-containing protein, and regulating their

## Target Details

translation. Two transcript variants encoding different isoforms have been found for this gene.

Molecular Weight: 63 kDa

NCBI Accession: [NP\\_006537](#)

UniProt: [Q9NZI8](#)

## Application Details

Application Notes: WB 1:500-1:2000

Restrictions: For Research Use only

## Handling

Format: Liquid

Concentration: 0.4 mg/mL

Buffer: PBS with 0.05 % sodium azide and 50 % glycerol, PH7.4

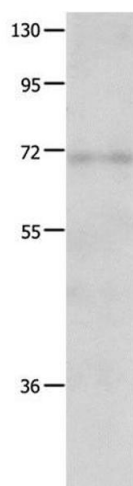
Preservative: Sodium azide

Precaution of Use: This product contains Sodium azide: a POISONOUS AND HAZARDOUS SUBSTANCE which should be handled by trained staff only.

Storage: -20 °C

Storage Comment: Store at -20°C. Avoid freeze / thaw cycles.

## Images



### Western Blotting

**Image 1.** Western Blot analysis of Human fetal lung tissue using IGF2BP1 Polyclonal Antibody at dilution of 1:500