

Datasheet for ABIN7238075

**anti-Claudin 3 antibody****1** Image[Go to Product page](#)

## Overview

Quantity:	200 µL
Target:	Claudin 3 (CLDN3)
Reactivity:	Human
Host:	Rabbit
Clonality:	Polyclonal
Conjugate:	This Claudin 3 antibody is un-conjugated
Application:	Western Blotting (WB), ELISA

## Product Details

Immunogen:	Synthetic peptide of human CLDN3
Isotype:	IgG
Characteristics:	Polyclonal Antibody
Purification:	Affinity purification

## Target Details

Target:	Claudin 3 (CLDN3)
Alternative Name:	Claudin 3 ( <a href="#">CLDN3 Products</a> )
Background:	Tight junctions represent one mode of cell-to-cell adhesion in epithelial or endothelial cell sheets, forming continuous seals around cells and serving as a physical barrier to prevent solutes and water from passing freely through the paracellular space. These junctions are comprised of sets of continuous networking strands in the outwardly facing cytoplasmic leaflet,

## Target Details

with complementary grooves in the inwardly facing extracytoplasmic leaflet. The protein encoded by this intronless gene, a member of the claudin family, is an integral membrane protein and a component of tight junction strands. It is also a low-affinity receptor for Clostridium perfringens enterotoxin, and shares aa sequence similarity with a putative apoptosis-related protein found in rat.

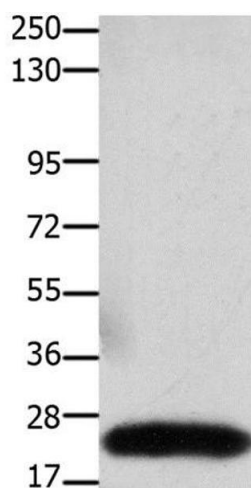
Molecular Weight:	23 kDa
NCBI Accession:	<a href="#">NP_001297</a>
UniProt:	<a href="#">O15551</a>
Pathways:	<a href="#">Hepatitis C</a>

## Application Details

Application Notes:	WB 1:500-1:2000
Restrictions:	For Research Use only

## Handling

Format:	Liquid
Concentration:	0.4 mg/mL
Buffer:	PBS with 0.05 % sodium azide and 50 % glycerol, PH7.4
Preservative:	Sodium azide
Precaution of Use:	This product contains Sodium azide: a POISONOUS AND HAZARDOUS SUBSTANCE which should be handled by trained staff only.
Storage:	-20 °C
Storage Comment:	Store at -20°C. Avoid freeze / thaw cycles.



#### Western Blotting

**Image 1.** Western Blot analysis of Human colon cancer tissue using Claudin 3 Polyclonal Antibody at dilution of 1:550