

Datasheet for ABIN7238081

anti-Claudin 1 antibody

3 Images

[Go to Product page](#)

Overview

Quantity:	200 µL
Target:	Claudin 1 (CLDN1)
Reactivity:	Human, Rat, Mouse
Host:	Rabbit
Clonality:	Polyclonal
Conjugate:	This Claudin 1 antibody is un-conjugated
Application:	Western Blotting (WB), ELISA, Immunohistochemistry (IHC)

Product Details

Immunogen:	Synthetic peptide of human CLDN1
Isotype:	IgG
Characteristics:	Polyclonal Antibody
Purification:	Affinity purification

Target Details

Target:	Claudin 1 (CLDN1)
Alternative Name:	Claudin 1 (CLDN1 Products)
Background:	Tight junctions represent one mode of cell-to-cell adhesion in epithelial or endothelial cell sheets, forming continuous seals around cells and serving as a physical barrier to prevent solutes and water from passing freely through the paracellular space. These junctions are comprised of sets of continuous networking strands in the outwardly facing cytoplasmic leaflet,

Target Details

with complementary grooves in the inwardly facing extracytoplasmic leaflet. The protein encoded by this gene, a member of the claudin family, is an integral membrane protein and a component of tight junction strands. Loss of function mutations result in neonatal ichthyosis-sclerosing cholangitis syndrome.

Molecular Weight: 23 kDa

NCBI Accession: [NP_066924](#)

UniProt: [O95832](#)

Pathways: [Cell-Cell Junction Organization](#), [Hepatitis C](#)

Application Details

Application Notes: WB 1:1000-1:3000, IHC 1:100-1:300

Restrictions: For Research Use only

Handling

Format: Liquid

Concentration: 0.5 mg/mL

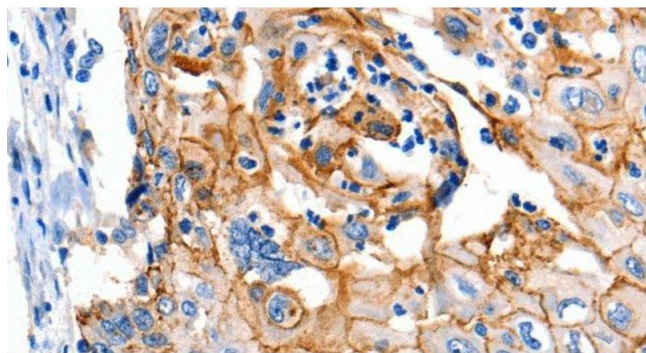
Buffer: PBS with 0.05 % sodium azide and 50 % glycerol, PH7.4

Preservative: Sodium azide

Precaution of Use: This product contains Sodium azide: a POISONOUS AND HAZARDOUS SUBSTANCE which should be handled by trained staff only.

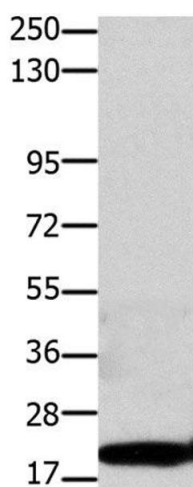
Storage: -20 °C

Storage Comment: Store at -20°C. Avoid freeze / thaw cycles.



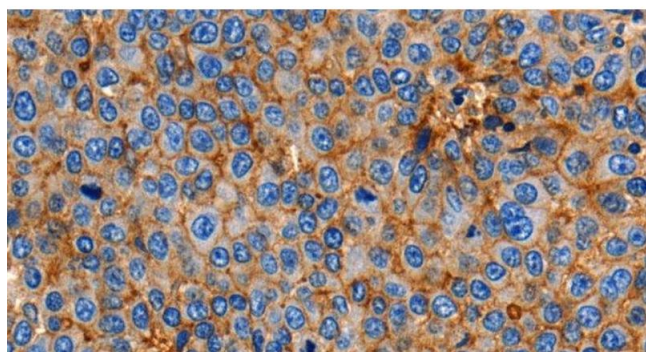
Immunohistochemistry (Paraffin-embedded Sections)

Image 1. Immunohistochemistry of paraffin-embedded Human cervical cancer using Claudin 1 Polyclonal Antibody at dilution of 1:150



Western Blotting

Image 2. Western Blot analysis of Hela cell using Claudin 1 Polyclonal Antibody at dilution of 1:1100



Immunohistochemistry (Paraffin-embedded Sections)

Image 3. Immunohistochemistry of paraffin-embedded Human esophagus cancer using Claudin 1 Polyclonal Antibody at dilution of 1:150