

Datasheet for ABIN7238090

**anti-CLDN10 antibody**[Go to Product page](#)**2** Images

## Overview

Quantity:	200 µL
Target:	CLDN10
Reactivity:	Human
Host:	Rabbit
Clonality:	Polyclonal
Conjugate:	This CLDN10 antibody is un-conjugated
Application:	ELISA, Immunohistochemistry (IHC)

## Product Details

Immunogen:	Synthetic peptide of human CLDN10
Isotype:	IgG
Characteristics:	Polyclonal Antibody
Purification:	Affinity purification

## Target Details

Target:	CLDN10
Alternative Name:	Claudin 10 ( <a href="#">CLDN10 Products</a> )
Background:	This gene encodes a member of the claudin family. Claudins are integral membrane proteins and components of tight junction strands. Tight junction strands serve as a physical barrier to prevent solutes and water from passing freely through the paracellular space between epithelial or endothelial cell sheets, and also play critical roles in maintaining cell polarity and signal

## Target Details

transductions. The expression level of this gene is associated with recurrence of primary hepatocellular carcinoma. Six alternatively spliced transcript variants encoding different isoforms have been reported, but the transcript sequences of some variants are not determined.

NCBI Accession: [NP\\_008915](#)

UniProt: [P78369](#)

Pathways: [Hepatitis C](#)

## Application Details

Application Notes: IHC 1:50-1:200

Restrictions: For Research Use only

## Handling

Format: Liquid

Concentration: 0.6 mg/mL

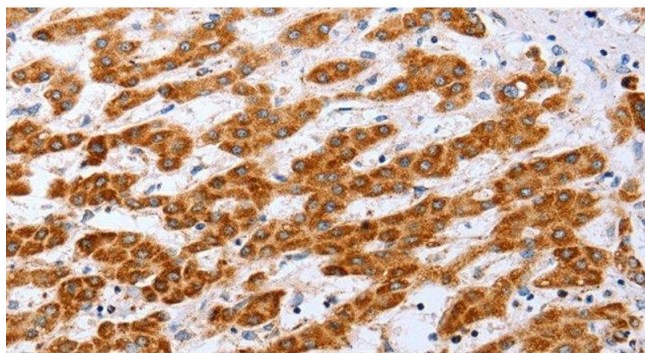
Buffer: PBS with 0.05 % sodium azide and 50 % glycerol, PH7.4

Preservative: Sodium azide

Precaution of Use: This product contains Sodium azide: a POISONOUS AND HAZARDOUS SUBSTANCE which should be handled by trained staff only.

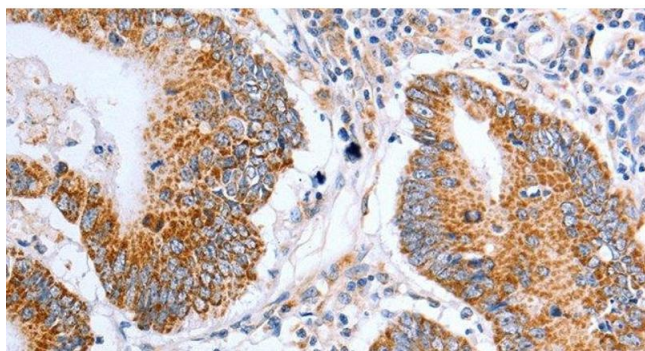
Storage: -20 °C

Storage Comment: Store at -20°C. Avoid freeze / thaw cycles.



#### Immunohistochemistry (Paraffin-embedded Sections)

**Image 1.** Immunohistochemistry of paraffin-embedded Human liver cancer tissue using Claudin 10 Polyclonal Antibody at dilution 1:50



#### Immunohistochemistry (Paraffin-embedded Sections)

**Image 2.** Immunohistochemistry of paraffin-embedded Human colon cancer tissue using Claudin 10 Polyclonal Antibody at dilution 1:50