

Datasheet for ABIN7238153

**anti-GDF2 antibody****3** Images[Go to Product page](#)

## Overview

Quantity:	200 µL
Target:	GDF2
Reactivity:	Human, Mouse
Host:	Rabbit
Clonality:	Polyclonal
Conjugate:	This GDF2 antibody is un-conjugated
Application:	Western Blotting (WB), ELISA, Immunohistochemistry (IHC)

## Product Details

Immunogen:	Synthetic peptide of human GDF2
Isotype:	IgG
Characteristics:	Polyclonal Antibody
Purification:	Affinity purification

## Target Details

Target:	GDF2
Alternative Name:	GDF2 ( <a href="#">GDF2 Products</a> )
Background:	The protein encoded by this gene is a member of the bone morphogenetic protein (BMP) family and the TGF-beta superfamily. This group of proteins is characterized by a polybasic proteolytic processing site which is cleaved to produce a mature protein containing seven conserved cysteine residues. The members of this family are regulators of cell growth and differentiation

## Target Details

in both embryonic and adult tissues. Studies in rodents suggest that this protein plays a role in the adult liver and in differentiation of cholinergic central nervous system neurons. Mutations in this gene are associated with hereditary hemorrhagic telangiectasia.

Molecular Weight: 47 kDa

NCBI Accession: [NP\\_057288](#)

UniProt: [Q9UK05](#)

Pathways: [Transition Metal Ion Homeostasis](#)

## Application Details

Application Notes: WB 1:500-1:2000, IHC 1:50-1:200

Restrictions: For Research Use only

## Handling

Format: Liquid

Concentration: 0.3 mg/mL

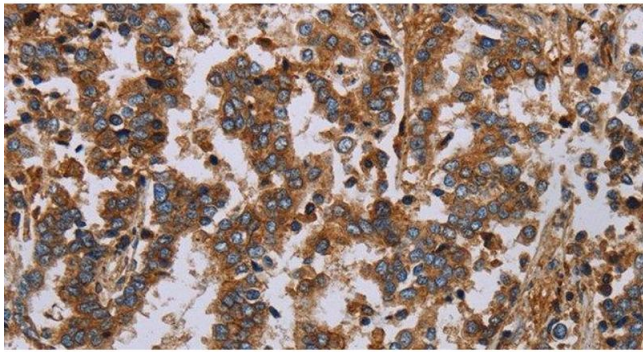
Buffer: PBS with 0.05 % sodium azide and 50 % glycerol, PH7.4

Preservative: Sodium azide

Precaution of Use: This product contains Sodium azide: a POISONOUS AND HAZARDOUS SUBSTANCE which should be handled by trained staff only.

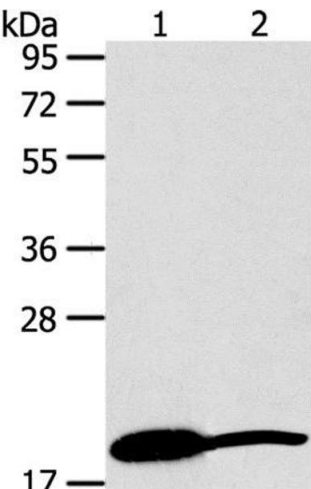
Storage: -20 °C

Storage Comment: Store at -20°C. Avoid freeze / thaw cycles.



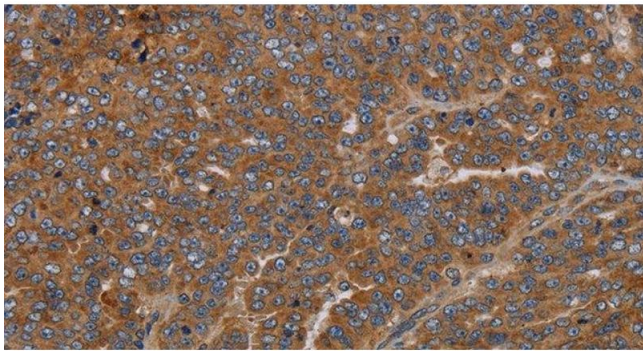
**Immunohistochemistry (Paraffin-embedded Sections)**

**Image 1.** Immunohistochemistry of paraffin-embedded Human liver cancer using GDF2 Polyclonal Antibody at dilution of 1:40



**Western Blotting**

**Image 2.** Western Blot analysis of Mouse heart and liver tissue using GDF2 Polyclonal Antibody at dilution of 1:200



**Immunohistochemistry (Paraffin-embedded Sections)**

**Image 3.** Immunohistochemistry of paraffin-embedded Human ovarian cancer using GDF2 Polyclonal Antibody at dilution of 1:40