

Datasheet for ABIN7238162

anti-MAPK11 antibody**3** Images[Go to Product page](#)

Overview

Quantity:	200 µL
Target:	MAPK11
Reactivity:	Human
Host:	Rabbit
Clonality:	Polyclonal
Conjugate:	This MAPK11 antibody is un-conjugated
Application:	Western Blotting (WB), ELISA, Immunohistochemistry (IHC)

Product Details

Immunogen:	Synthetic peptide of human MAPK11
Isotype:	IgG
Characteristics:	Polyclonal Antibody
Purification:	Affinity purification

Target Details

Target:	MAPK11
Alternative Name:	MAPK11 (MAPK11 Products)
Background:	The protein encoded by this gene is a member of the MAP kinase family. MAP kinases act as an integration point for multiple biochemical signals, and are involved in a wide variety of cellular processes such as proliferation, differentiation, transcription regulation, and development. This kinase is most closely related to p38 MAP kinase, both of which can be

Target Details

activated by proinflammatory cytokines and environmental stress. This kinase is activated through its phosphorylation by MAP kinase kinases (MKKs), preferably by MKK6. Transcription factor ATF2/CREB2 has been shown to be a substrate of this kinase. [

Molecular Weight: 41 kDa

NCBI Accession: [NP_002742](#)

UniProt: [Q15759](#)

Pathways: [MAPK Signaling](#), [Neurotrophin Signaling Pathway](#), [Activation of Innate immune Response](#), [Response to Water Deprivation](#), [Regulation of Muscle Cell Differentiation](#), [ER-Nucleus Signaling](#), [Hepatitis C](#), [Toll-Like Receptors Cascades](#), [Signaling Events mediated by VEGFR1 and VEGFR2](#), [Thromboxane A2 Receptor Signaling](#), [BCR Signaling](#), [S100 Proteins](#)

Application Details

Application Notes: WB 1:500-1:2000, IHC 1:25-1:100

Restrictions: For Research Use only

Handling

Format: Liquid

Concentration: 0.6 mg/mL

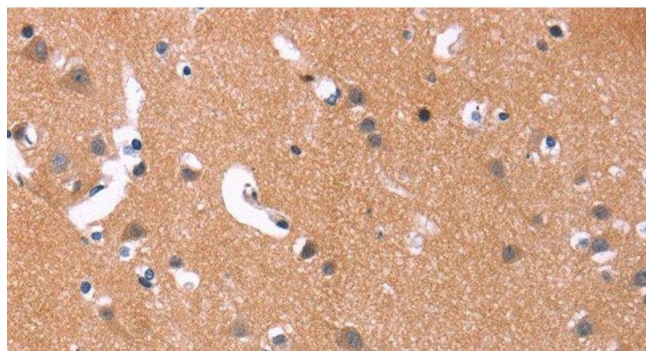
Buffer: PBS with 0.05 % sodium azide and 50 % glycerol, PH7.4

Preservative: Sodium azide

Precaution of Use: This product contains Sodium azide: a POISONOUS AND HAZARDOUS SUBSTANCE which should be handled by trained staff only.

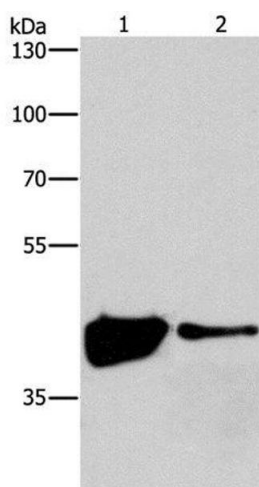
Storage: -20 °C

Storage Comment: Store at -20°C. Avoid freeze / thaw cycles.



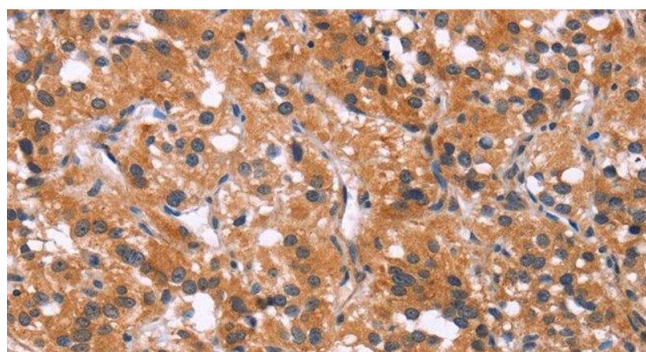
Immunohistochemistry (Paraffin-embedded Sections)

Image 1. Immunohistochemistry of paraffin-embedded Human brain using MAPK11 Polyclonal Antibody at dilution of 1:30



Western Blotting

Image 2. Western Blot analysis of 293T and Human fetal brain tissue using MAPK11 Polyclonal Antibody at dilution of 1:200



Immunohistochemistry (Paraffin-embedded Sections)

Image 3. Immunohistochemistry of paraffin-embedded Human thyroid cancer using MAPK11 Polyclonal Antibody at dilution of 1:30