



Datasheet for ABIN7238198 anti-CEACAM6 antibody



[Go to Product page](#)

2 Images

Overview

Quantity:	200 µL
Target:	CEACAM6
Reactivity:	Human
Host:	Rabbit
Clonality:	Polyclonal
Conjugate:	This CEACAM6 antibody is un-conjugated
Application:	ELISA, Immunohistochemistry (IHC)

Product Details

Immunogen:	Synthetic peptide of human CEACAM6
Isotype:	IgG
Characteristics:	Polyclonal Antibody
Purification:	Affinity purification

Target Details

Target:	CEACAM6
Alternative Name:	CEACAM6 (CEACAM6 Products)
Background:	Carcinoembryonic antigen (CEA, MIM 114890) is one of the most widely used tumor markers in serum immunoassay determinations of carcinoma. An apparent lack of absolute cancer specificity for CEA probably results in part from the presence in normal and neoplastic tissues of antigens that share antigenic determinants with the 180-kD form of CEA (Barnett et al., 1988)

Target Details

[PubMed 3220478]). For background information on the CEA family of genes, see CEACAM1 (MIM 109770).

NCBI Accession: [NP_002474](#)

UniProt: [P40199](#)

Application Details

Application Notes: IHC 1:50-1:200

Restrictions: For Research Use only

Handling

Format: Liquid

Concentration: 0.6 mg/mL

Buffer: PBS with 0.05 % sodium azide and 50 % glycerol, PH7.4

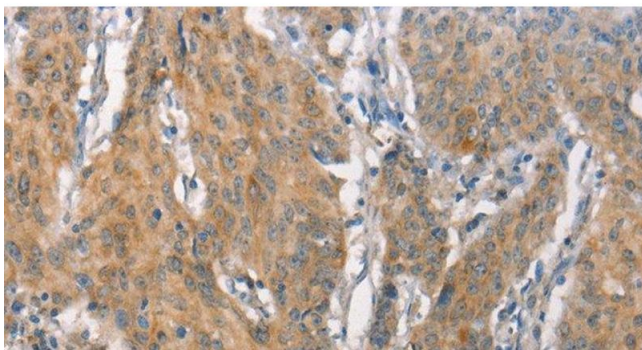
Preservative: Sodium azide

Precaution of Use: This product contains Sodium azide: a POISONOUS AND HAZARDOUS SUBSTANCE which should be handled by trained staff only.

Storage: -20 °C

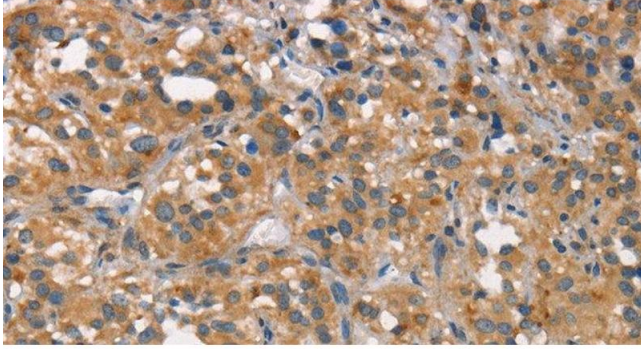
Storage Comment: Store at -20°C. Avoid freeze / thaw cycles.

Images



Immunohistochemistry (Paraffin-embedded Sections)

Image 1. Immunohistochemistry of paraffin-embedded Human gastric cancer tissue using CEACAM6 Polyclonal Antibody at dilution 1:50



Immunohistochemistry (Paraffin-embedded Sections)

Image 2. Immunohistochemistry of paraffin-embedded Human thyroid cancer tissue using CEACAM6 Polyclonal Antibody at dilution 1:50