



[Go to Product page](#)

Datasheet for ABIN7238228  
**anti-SLC8A3 antibody**

2 Images

Overview

Quantity:	200 µL
Target:	SLC8A3
Reactivity:	Human
Host:	Rabbit
Clonality:	Polyclonal
Conjugate:	This SLC8A3 antibody is un-conjugated
Application:	ELISA, Immunohistochemistry (IHC)

Product Details

Immunogen:	Synthetic peptide of human SLC8A3
Isotype:	IgG
Characteristics:	Polyclonal Antibody
Purification:	Affinity purification

Target Details

Target:	SLC8A3
Alternative Name:	SLC8A3 ( <a href="#">SLC8A3 Products</a> )
Background:	This gene encodes a member of the sodium/calcium exchanger integral membrane protein family. Three mammalian isoforms in family 8 have been identified. Na <sup>+</sup> /Ca <sup>2+</sup> exchange proteins are involved in maintaining Ca <sup>2+</sup> homeostasis in a wide variety of cell types. The protein is regulated by intracellular calcium ions and is found in both the plasma membrane

## Target Details

and intracellular organellar membranes, where exchange of Na<sup>+</sup> for Ca<sup>2+</sup> occurs in an electrogenic manner. Alternative splicing has been observed for this gene and multiple variants have been described.

NCBI Accession: [NP\\_001123889](#)

UniProt: [P57103](#)

## Application Details

Application Notes: IHC 1:100-1:300

Restrictions: For Research Use only

## Handling

Format: Liquid

Concentration: 0.5 mg/mL

Buffer: PBS with 0.05 % sodium azide and 50 % glycerol, PH7.4

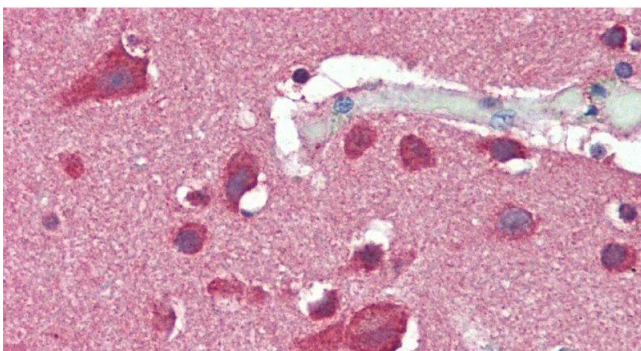
Preservative: Sodium azide

Precaution of Use: This product contains Sodium azide: a POISONOUS AND HAZARDOUS SUBSTANCE which should be handled by trained staff only.

Storage: -20 °C

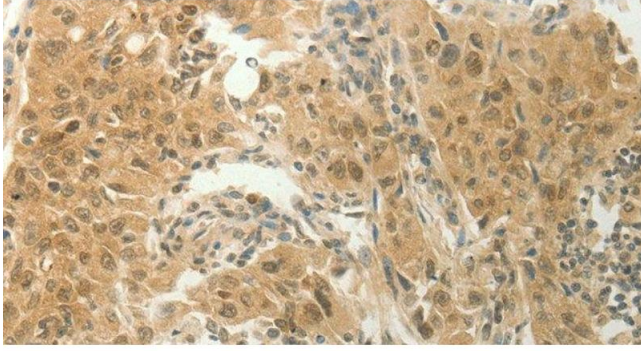
Storage Comment: Store at -20°C. Avoid freeze / thaw cycles.

## Images



### Immunohistochemistry (Paraffin-embedded Sections)

**Image 1.** Immunohistochemistry of paraffin-embedded Brain, Cortex tissue using SLC8A3 Polyclonal Antibody at dilution of 1:50.



### Immunohistochemistry (Paraffin-embedded Sections)

**Image 2.** Immunohistochemistry of paraffin-embedded Human lung cancer tissue using SLC8A3 Polyclonal Antibody at dilution 1:70