

Datasheet for ABIN7238276

anti-SLC22A6 antibody**3** Images[Go to Product page](#)

Overview

Quantity:	200 µL
Target:	SLC22A6
Reactivity:	Human, Rat
Host:	Rabbit
Clonality:	Polyclonal
Conjugate:	This SLC22A6 antibody is un-conjugated
Application:	Western Blotting (WB), Immunohistochemistry (IHC), ELISA

Product Details

Immunogen:	Synthetic peptide of human SLC22A6
Isotype:	IgG
Characteristics:	Polyclonal Antibody
Purification:	Affinity purification

Target Details

Target:	SLC22A6
Alternative Name:	SLC22A6 (SLC22A6 Products)
Background:	The protein encoded by this gene is involved in the sodium-dependent transport and excretion of organic anions, some of which are potentially toxic. The encoded protein is an integral membrane protein and may be localized to the basolateral membrane. Four transcript variants encoding four different isoforms have been found for this gene. Functions as organic anion

Target Details

exchanger when the uptake of one molecule of organic anion is coupled with an efflux of one molecule of endogenous dicarboxylic acid (glutarate, ketoglutarate, etc). Mediates the sodium-independent uptake of 2,3-dimercapto-1-propanesulfonic acid (DMPS) By similarity.

Molecular Weight: 56 kDa

NCBI Accession: [NP_004781](#)

UniProt: [Q4U2R8](#)

Pathways: [Dicarboxylic Acid Transport](#)

Application Details

Application Notes: WB 1:500-1:2000, IHC 1:50-1:200

Restrictions: For Research Use only

Handling

Format: Liquid

Concentration: 0.3 mg/mL

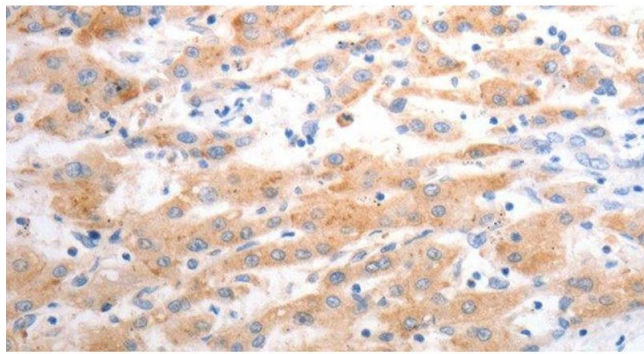
Buffer: PBS with 0.05 % sodium azide and 50 % glycerol, PH7.4

Preservative: Sodium azide

Precaution of Use: This product contains Sodium azide: a POISONOUS AND HAZARDOUS SUBSTANCE which should be handled by trained staff only.

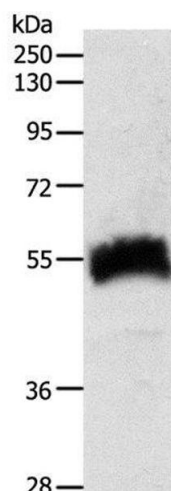
Storage: -20 °C

Storage Comment: Store at -20°C. Avoid freeze / thaw cycles.



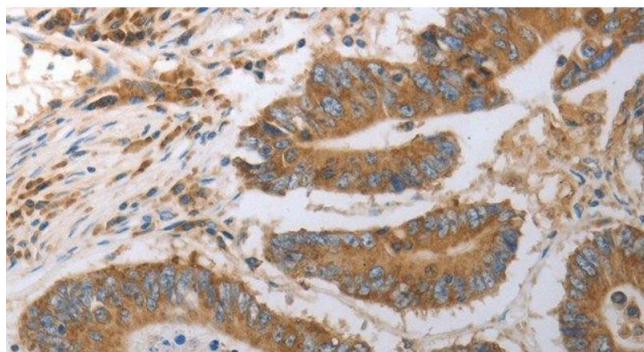
Immunohistochemistry (Paraffin-embedded Sections)

Image 1. Immunohistochemistry of paraffin-embedded Human liver cancer using SLC22A6 Polyclonal Antibody at dilution of 1:40



Western Blotting

Image 2. Western Blot analysis of Human fetal kidney tissue using SLC22A6 Polyclonal Antibody at dilution of 1:600



Immunohistochemistry (Paraffin-embedded Sections)

Image 3. Immunohistochemistry of paraffin-embedded Human colon cancer using SLC22A6 Polyclonal Antibody at dilution of 1:40