



[Go to Product page](#)

Datasheet for ABIN7238285

anti-PAK1 antibody

3 Images

Overview

| | |
|--------------|--|
| Quantity: | 200 µL |
| Target: | PAK1 |
| Reactivity: | Human, Rat, Mouse |
| Host: | Rabbit |
| Clonality: | Polyclonal |
| Conjugate: | This PAK1 antibody is un-conjugated |
| Application: | Western Blotting (WB), Immunohistochemistry (IHC), ELISA |

Product Details

| | |
|------------------|---------------------------------|
| Immunogen: | Synthetic peptide of human PAK1 |
| Isotype: | IgG |
| Characteristics: | Polyclonal Antibody |
| Purification: | Affinity purification |

Target Details

| | |
|-------------------|---|
| Target: | PAK1 |
| Alternative Name: | PAK1 (PAK1 Products) |
| Background: | This gene encodes a family member of serine/threonine p21-activating kinases, known as PAK proteins. These proteins are critical effectors that link RhoGTPases to cytoskeleton reorganization and nuclear signaling, and they serve as targets for the small GTP binding proteins Cdc42 and Rac. This specific family member regulates cell motility and morphology. |

Target Details

Alternatively spliced transcript variants encoding different isoforms have been found for this gene.

Molecular Weight: 61 kDa

NCBI Accession: [NP_001122092](#)

UniProt: [Q13153](#)

Pathways: [MAPK Signaling](#), [RTK Signaling](#), [TCR Signaling](#), [Fc-epsilon Receptor Signaling Pathway](#), [Intracellular Steroid Hormone Receptor Signaling Pathway](#), [Regulation of Intracellular Steroid Hormone Receptor Signaling](#), [Skeletal Muscle Fiber Development](#), [CXCR4-mediated Signaling Events](#), [Signaling Events mediated by VEGFR1 and VEGFR2](#), [Signaling of Hepatocyte Growth Factor Receptor](#), [Embryonic Body Morphogenesis](#)

Application Details

Application Notes: WB 1:500-1:2000, IHC 1:25-1:100

Restrictions: For Research Use only

Handling

Format: Liquid

Concentration: 0.3 mg/mL

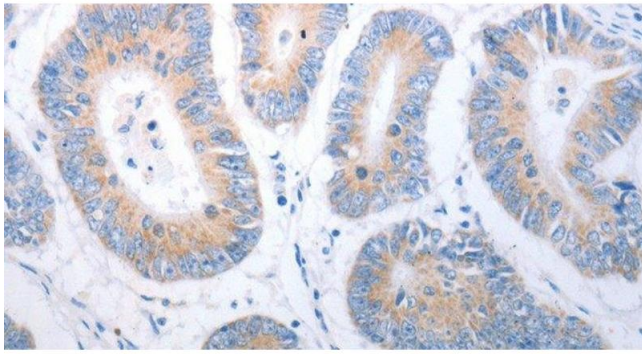
Buffer: PBS with 0.05 % sodium azide and 50 % glycerol, PH7.4

Preservative: Sodium azide

Precaution of Use: This product contains Sodium azide: a POISONOUS AND HAZARDOUS SUBSTANCE which should be handled by trained staff only.

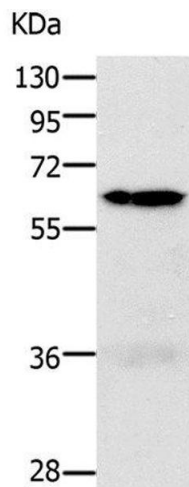
Storage: -20 °C

Storage Comment: Store at -20°C. Avoid freeze / thaw cycles.



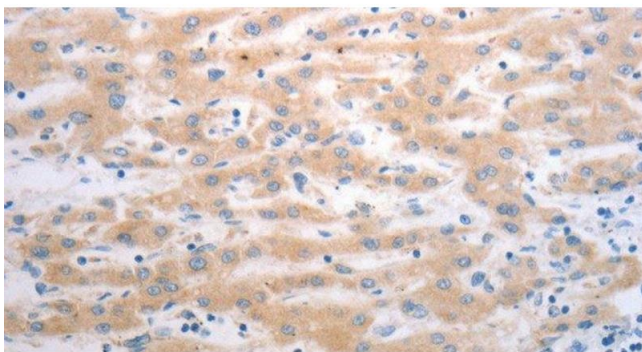
Immunohistochemistry (Paraffin-embedded Sections)

Image 1. Immunohistochemistry of paraffin-embedded Human colon cancer using PAK1 Polyclonal Antibody at dilution of 1:40



Western Blotting

Image 2. Western Blot analysis of 293T and K562 cell using PAK1 Polyclonal Antibody at dilution of 1:700



Immunohistochemistry (Paraffin-embedded Sections)

Image 3. Immunohistochemistry of paraffin-embedded Human liver cancer using PAK1 Polyclonal Antibody at dilution of 1:40