



Datasheet for ABIN7238300 anti-PDGFA antibody



[Go to Product page](#)

2 Images

Overview

Quantity:	200 µL
Target:	PDGFA
Reactivity:	Human, Mouse, Rat
Host:	Rabbit
Clonality:	Polyclonal
Conjugate:	This PDGFA antibody is un-conjugated
Application:	Immunohistochemistry (IHC), ELISA

Product Details

Immunogen:	Synthetic peptide of human PDGFA
Isotype:	IgG
Characteristics:	Polyclonal Antibody
Purification:	Affinity purification

Target Details

Target:	PDGFA
Alternative Name:	PDGFA (PDGFA Products)
Background:	The protein encoded by this gene is a member of the platelet-derived growth factor family. The four members of this family are mitogenic factors for cells of mesenchymal origin and are characterized by a motif of eight cysteines. This gene product can exist either as a homodimer or as a heterodimer with the platelet-derived growth factor beta polypeptide, where the dimers

Target Details

are connected by disulfide bonds. Studies using knockout mice have shown cellular defects in oligodendrocytes, alveolar smooth muscle cells, and Leydig cells in the testis, knockout mice die either as embryos or shortly after birth. Two splice variants have been identified for this gene.

NCBI Accession: [NP_002598](#)

UniProt: [P04085](#)

Pathways: [RTK Signaling](#), [Fc-epsilon Receptor Signaling Pathway](#), [EGFR Signaling Pathway](#), [Neurotrophin Signaling Pathway](#), [Smooth Muscle Cell Migration](#), [Platelet-derived growth Factor Receptor Signaling](#)

Application Details

Application Notes: IHC 1:100-1:300

Restrictions: For Research Use only

Handling

Format: Liquid

Concentration: 1.1 mg/mL

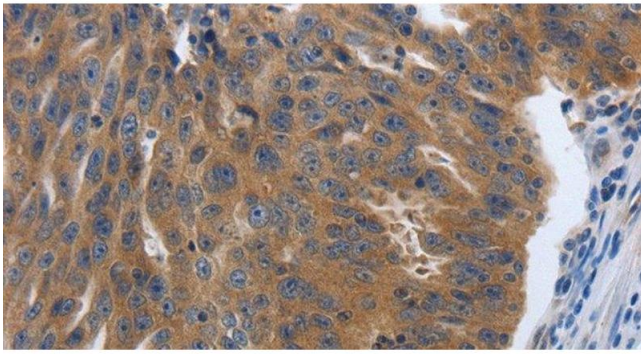
Buffer: PBS with 0.05 % sodium azide and 50 % glycerol, PH7.4

Preservative: Sodium azide

Precaution of Use: This product contains Sodium azide: a POISONOUS AND HAZARDOUS SUBSTANCE which should be handled by trained staff only.

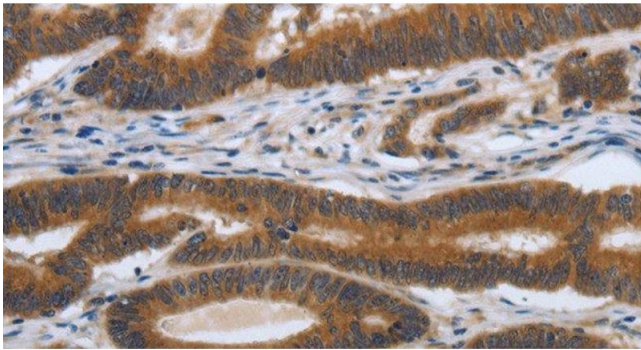
Storage: -20 °C

Storage Comment: Store at -20°C. Avoid freeze / thaw cycles.



Immunohistochemistry (Paraffin-embedded Sections)

Image 1. Immunohistochemistry of paraffin-embedded Human ovarian cancer tissue using PDGFA Polyclonal Antibody at dilution 1:70



Immunohistochemistry (Paraffin-embedded Sections)

Image 2. Immunohistochemistry of paraffin-embedded Human colon cancer tissue using PDGFA Polyclonal Antibody at dilution 1:70