

Datasheet for ABIN7238306
anti-PRKAR1B antibody[Go to Product page](#)

3 Images

Overview

Quantity:	200 µL
Target:	PRKAR1B
Reactivity:	Human, Mouse, Rat
Host:	Rabbit
Clonality:	Polyclonal
Conjugate:	This PRKAR1B antibody is un-conjugated
Application:	Western Blotting (WB), ELISA, Immunohistochemistry (IHC)

Product Details

Immunogen:	Synthetic peptide of human PRKAR1B
Isotype:	IgG
Characteristics:	Polyclonal Antibody
Purification:	Affinity purification

Target Details

Target:	PRKAR1B
Alternative Name:	PRKAR1B (PRKAR1B Products)
Background:	Cyclic AMP-dependent protein kinase A (PKA) is an essential enzyme in the signaling pathway of the second messenger cAMP. Through phosphorylation of target proteins, PKA controls many biochemical events in the cell including regulation of metabolism, ion transport, and gene transcription. The PKA holoenzyme is composed of 2 regulatory and 2 catalytic subunits and

Target Details

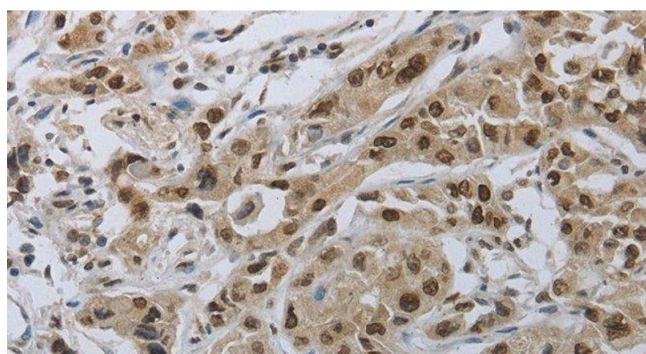
	dissociates from the regulatory subunits upon binding of cAMP.
Molecular Weight:	43 kDa
NCBI Accession:	NP_001158230
UniProt:	P31321
Pathways:	Hedgehog Signaling , EGFR Signaling Pathway , Neurotrophin Signaling Pathway , Myometrial Relaxation and Contraction , G-protein mediated Events , Interaction of EGFR with phospholipase C-gamma

Application Details

Application Notes:	WB 1:1000-1:5000, IHC 1:50-1:200
Restrictions:	For Research Use only

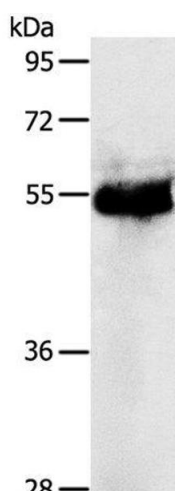
Handling

Format:	Liquid
Concentration:	0.9 mg/mL
Buffer:	PBS with 0.05 % sodium azide and 50 % glycerol, PH7.4
Preservative:	Sodium azide
Precaution of Use:	This product contains Sodium azide: a POISONOUS AND HAZARDOUS SUBSTANCE which should be handled by trained staff only.
Storage:	-20 °C
Storage Comment:	Store at -20°C. Avoid freeze / thaw cycles.



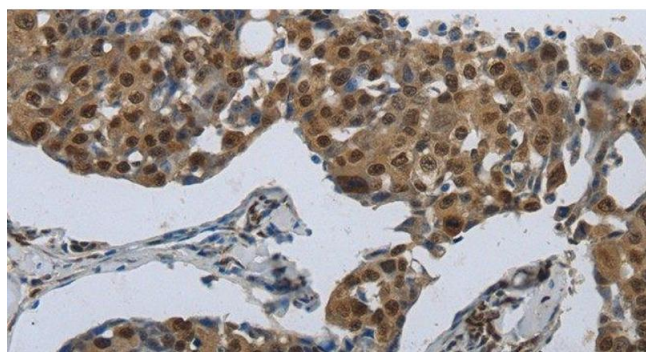
Immunohistochemistry (Paraffin-embedded Sections)

Image 1. Immunohistochemistry of paraffin-embedded Human lung cancer using PRKAR1B Polyclonal Antibody at dilution of 1:70



Western Blotting

Image 2. Western Blot analysis of Human colon cancer tissue using PRKAR1B Polyclonal Antibody at dilution of 1:1200



Immunohistochemistry (Paraffin-embedded Sections)

Image 3. Immunohistochemistry of paraffin-embedded Human breast cancer using PRKAR1B Polyclonal Antibody at dilution of 1:70