

Datasheet for ABIN7238312

anti-PPP2CB antibody[Go to Product page](#)**2** Images

Overview

Quantity:	200 µL
Target:	PPP2CB
Reactivity:	Human, Mouse, Rat
Host:	Rabbit
Clonality:	Polyclonal
Conjugate:	This PPP2CB antibody is un-conjugated
Application:	Western Blotting (WB), ELISA, Immunohistochemistry (IHC)

Product Details

Immunogen:	Synthetic peptide of human PPP2CB
Isotype:	IgG
Characteristics:	Polyclonal Antibody
Purification:	Affinity purification

Target Details

Target:	PPP2CB
Alternative Name:	PPP2CB (PPP2CB Products)
Background:	This gene encodes the phosphatase 2A catalytic subunit. Protein phosphatase 2A is one of the four major Ser/Thr phosphatases, and it is implicated in the negative control of cell growth and division. It consists of a common heteromeric core enzyme, which is composed of a catalytic subunit and a constant regulatory subunit, that associates with a variety of regulatory subunits.

Target Details

	This gene encodes a beta isoform of the catalytic subunit.
Molecular Weight:	36 kDa
NCBI Accession:	NP_001009552
UniProt:	P62714
Pathways:	Mitotic G1-G1/S Phases , Hepatitis C , Toll-Like Receptors Cascades

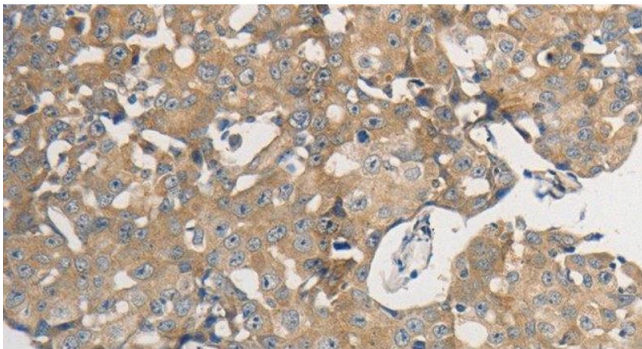
Application Details

Application Notes:	WB 1:1000-1:5000, IHC 1:50-1:200
Restrictions:	For Research Use only

Handling

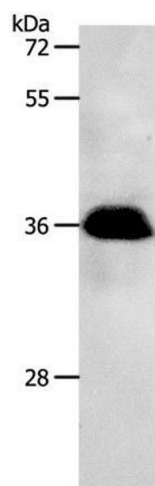
Format:	Liquid
Concentration:	0.5 mg/mL
Buffer:	PBS with 0.05 % sodium azide and 50 % glycerol, PH7.4
Preservative:	Sodium azide
Precaution of Use:	This product contains Sodium azide: a POISONOUS AND HAZARDOUS SUBSTANCE which should be handled by trained staff only.
Storage:	-20 °C
Storage Comment:	Store at -20°C. Avoid freeze / thaw cycles.

Images



Immunohistochemistry (Paraffin-embedded Sections)

Image 1. Immunohistochemistry of paraffin-embedded Human breast cancer using PPP2CB Polyclonal Antibody at dilution of 1:50



Western Blotting

Image 2. Western Blot analysis of Jurkat cell using PPP2CB Polyclonal Antibody at dilution of 1:1200