

Datasheet for ABIN7238330

**anti-s100a4 antibody****2** Images[Go to Product page](#)

## Overview

Quantity:	200 µL
Target:	s100a4 (S100A4)
Reactivity:	Human
Host:	Rabbit
Clonality:	Polyclonal
Conjugate:	This s100a4 antibody is un-conjugated
Application:	Immunohistochemistry (IHC), ELISA

## Product Details

Immunogen:	Synthetic peptide of human S100A4
Isotype:	IgG
Characteristics:	Polyclonal Antibody
Purification:	Affinity purification

## Target Details

Target:	s100a4 (S100A4)
Alternative Name:	S100A4 ( <a href="#">S100A4 Products</a> )
Background:	The protein encoded by this gene is a member of the S100 family of proteins containing 2 EF-hand calcium-binding motifs. S100 proteins are localized in the cytoplasm and/or nucleus of a wide range of cells, and involved in the regulation of a number of cellular processes such as cell cycle progression and differentiation. S100 genes include at least 13 members which are

## Target Details

---

located as a cluster on chromosome 1q21. This protein may function in motility, invasion, and tubulin polymerization. Chromosomal rearrangements and altered expression of this gene have been implicated in tumor metastasis. Multiple alternatively spliced variants, encoding the same protein, have been identified.

NCBI Accession: [NP\\_002952](#)

UniProt: [P26447](#)

Pathways: [S100 Proteins](#)

## Application Details

---

Application Notes: IHC 1:100-1:300

Restrictions: For Research Use only

## Handling

---

Format: Liquid

Concentration: 0.6 mg/mL

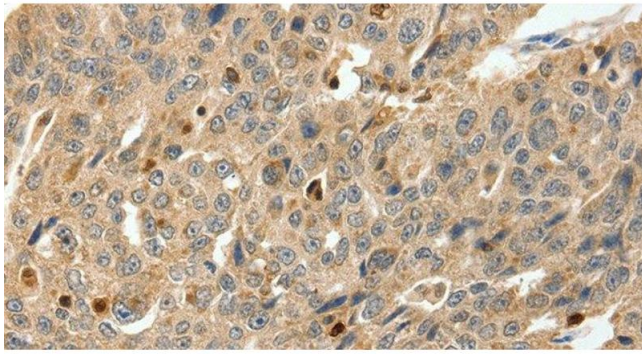
Buffer: PBS with 0.05 % sodium azide and 50 % glycerol, PH7.4

Preservative: Sodium azide

Precaution of Use: This product contains Sodium azide: a POISONOUS AND HAZARDOUS SUBSTANCE which should be handled by trained staff only.

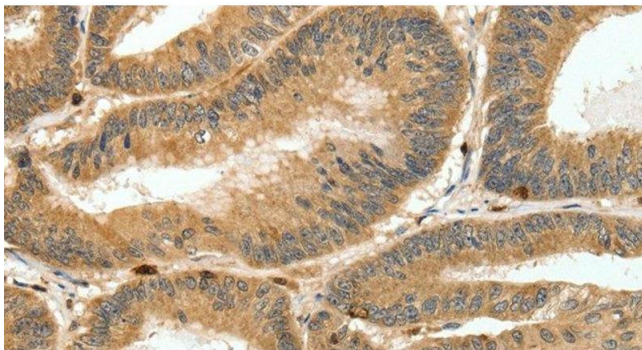
Storage: -20 °C

Storage Comment: Store at -20°C. Avoid freeze / thaw cycles.



#### Immunohistochemistry (Paraffin-embedded Sections)

**Image 1.** Immunohistochemistry of paraffin-embedded Human ovarian cancer tissue using S100A4 Polyclonal Antibody at dilution 1:80



#### Immunohistochemistry (Paraffin-embedded Sections)

**Image 2.** Immunohistochemistry of paraffin-embedded Human colon cancer tissue using S100A4 Polyclonal Antibody at dilution 1:80