



Datasheet for ABIN7238384 anti-PLAT antibody



[Go to Product page](#)

3 Images

Overview

Quantity:	200 µL
Target:	PLAT
Reactivity:	Human
Host:	Rabbit
Clonality:	Polyclonal
Conjugate:	This PLAT antibody is un-conjugated
Application:	Western Blotting (WB), ELISA, Immunohistochemistry (IHC)

Product Details

Immunogen:	Synthetic peptide of human PLAT
Isotype:	IgG
Characteristics:	Polyclonal Antibody
Purification:	Affinity purification

Target Details

Target:	PLAT
Alternative Name:	PLAT (PLAT Products)
Background:	This gene encodes tissue-type plasminogen activator, a secreted serine protease which converts the proenzyme plasminogen to plasmin, a fibrinolytic enzyme. Tissue-type plasminogen activator is synthesized as a single chain which is cleaved by plasmin to a two chain disulfide linked protein. This enzyme plays a role in cell migration and tissue remodeling.

Target Details

Increased enzymatic activity causes hyperfibrinolysis, which manifests as excessive bleeding, decreased activity leads to hypofibrinolysis which can result in thrombosis or embolism. Alternative splicing of this gene results in multiple transcript variants encoding different isoforms.

Molecular Weight: 63 kDa

NCBI Accession: [NP_000921](#)

UniProt: [P00750](#)

Pathways: [Autophagy](#), [Smooth Muscle Cell Migration](#), [Platelet-derived growth Factor Receptor Signaling](#), [SARS-CoV-2 Protein Interactome](#)

Application Details

Application Notes: WB 1:200-1:1000, IHC 1:50-1:200

Restrictions: For Research Use only

Handling

Format: Liquid

Concentration: 0.4 mg/mL

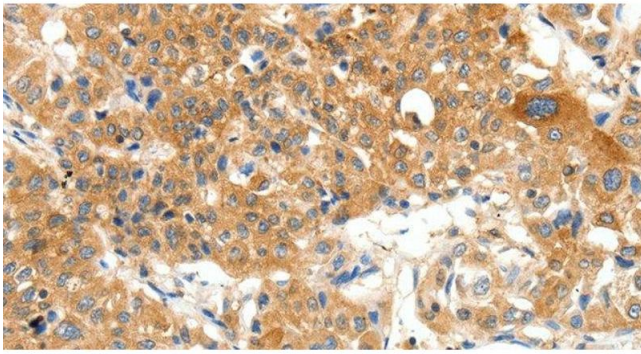
Buffer: PBS with 0.05 % sodium azide and 50 % glycerol, PH7.4

Preservative: Sodium azide

Precaution of Use: This product contains Sodium azide: a POISONOUS AND HAZARDOUS SUBSTANCE which should be handled by trained staff only.

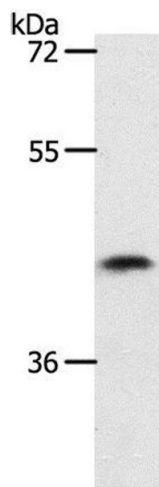
Storage: -20 °C

Storage Comment: Store at -20°C. Avoid freeze / thaw cycles.



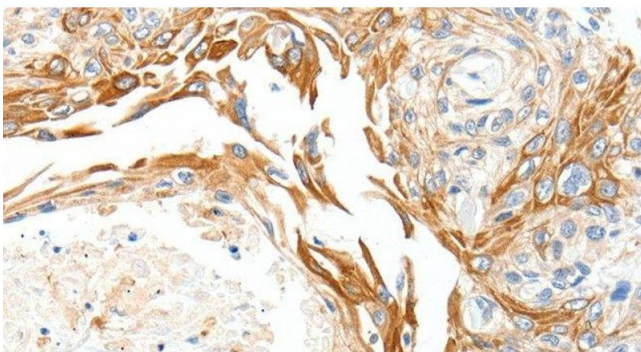
Immunohistochemistry (Paraffin-embedded Sections)

Image 1. Immunohistochemistry of paraffin-embedded Human lung cancer using PLAT Polyclonal Antibody at dilution of 1:50



Western Blotting

Image 2. Western Blot analysis of 231 cell using PLAT Polyclonal Antibody at dilution of 1:450



Immunohistochemistry (Paraffin-embedded Sections)

Image 3. Immunohistochemistry of paraffin-embedded Human esophagus cancer using PLAT Polyclonal Antibody at dilution of 1:50