

Datasheet for ABIN7238387
anti-Surfactant Protein A1 antibody

2 Images

[Go to Product page](#)

Overview

Quantity:	200 µL
Target:	Surfactant Protein A1 (SFTPA1)
Reactivity:	Human, Rat
Host:	Rabbit
Clonality:	Polyclonal
Conjugate:	This Surfactant Protein A1 antibody is un-conjugated
Application:	Western Blotting (WB), Immunohistochemistry (IHC), ELISA

Product Details

Immunogen:	Synthetic peptide of human SFTPA1
Isotype:	IgG
Characteristics:	Polyclonal Antibody
Purification:	Affinity purification

Target Details

Target:	Surfactant Protein A1 (SFTPA1)
Alternative Name:	SFTPA1 (SFTPA1 Products)
Background:	This gene encodes a lung surfactant protein that is a member of a subfamily of C-type lectins called collectins. The encoded protein binds specific carbohydrate moieties found on lipids and on the surface of microorganisms. This protein plays an essential role in surfactant homeostasis and in the defense against respiratory pathogens. Mutations in this gene are

Target Details

associated with idiopathic pulmonary fibrosis. Alternate splicing results in multiple transcript variants.

Molecular Weight: 28 kDa

NCBI Accession: [NP_005402](#)

UniProt: [Q8IWL2](#)

Application Details

Application Notes: WB 1:200-1:1000, IHC 1:50-1:200

Restrictions: For Research Use only

Handling

Format: Liquid

Concentration: 0.3 mg/mL

Buffer: PBS with 0.05 % sodium azide and 50 % glycerol, PH7.4

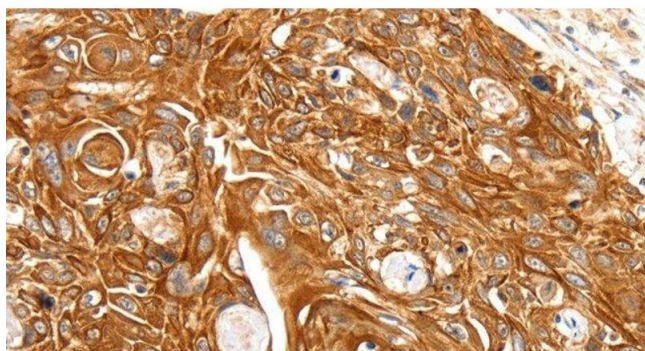
Preservative: Sodium azide

Precaution of Use: This product contains Sodium azide: a POISONOUS AND HAZARDOUS SUBSTANCE which should be handled by trained staff only.

Storage: -20 °C

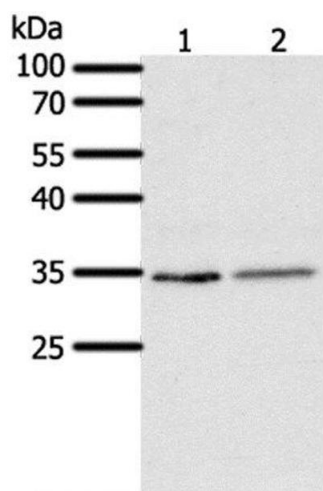
Storage Comment: Store at -20°C. Avoid freeze / thaw cycles.

Images



Immunohistochemistry (Paraffin-embedded Sections)

Image 1. Immunohistochemistry of paraffin-embedded Human esophagus cancer using SFTP1 Polyclonal Antibody at dilution of 1:30



Western Blotting

Image 2. Western Blot analysis of Human fetal lung tissue and A549 cell using SFTP1 Polyclonal Antibody at dilution of 1:300