

Datasheet for ABIN7238444

**anti-RARRES1 antibody**

3 Images

[Go to Product page](#)

## Overview

Quantity:	200 µL
Target:	RARRES1
Reactivity:	Human
Host:	Rabbit
Clonality:	Polyclonal
Conjugate:	This RARRES1 antibody is un-conjugated
Application:	Western Blotting (WB), Immunohistochemistry (IHC), ELISA

## Product Details

Immunogen:	Synthetic peptide of human RARRES1
Isotype:	IgG
Characteristics:	Polyclonal Antibody
Purification:	Affinity purification

## Target Details

Target:	RARRES1
Alternative Name:	RARRES1 ( <a href="#">RARRES1 Products</a> )
Background:	This gene was identified as a retinoid acid (RA) receptor-responsive gene. It encodes a type 1 membrane protein. The expression of this gene is upregulated by tazarotene as well as by retinoic acid receptors. The expression of this gene is found to be downregulated in prostate cancer, which is caused by the methylation of its promoter and CpG island. Alternatively spliced

## Target Details

transcript variant encoding distinct isoforms have been observed.

Molecular Weight: 26 kDa

NCBI Accession: [NP\\_002879](#)

UniProt: [P49788](#)

## Application Details

Application Notes: WB 1:500-1:2000, IHC 1:100-1:300

Restrictions: For Research Use only

## Handling

Format: Liquid

Concentration: 0.7 mg/mL

Buffer: PBS with 0.05 % sodium azide and 50 % glycerol, PH7.4

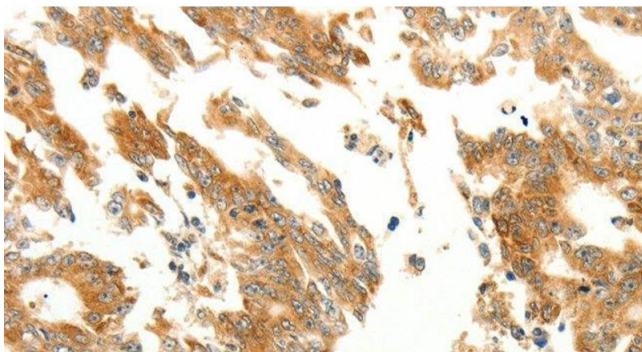
Preservative: Sodium azide

Precaution of Use: This product contains Sodium azide: a POISONOUS AND HAZARDOUS SUBSTANCE which should be handled by trained staff only.

Storage: -20 °C

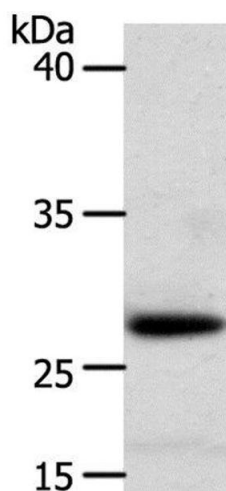
Storage Comment: Store at -20°C. Avoid freeze / thaw cycles.

## Images



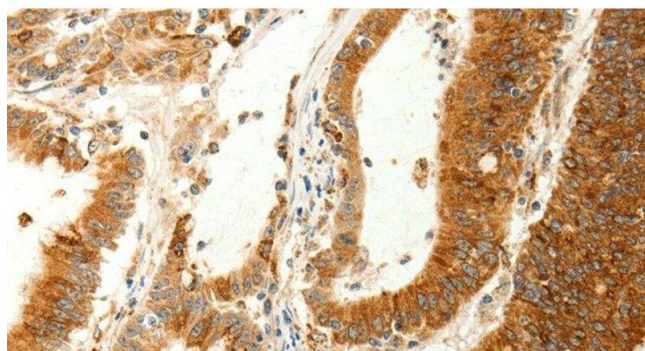
### Immunohistochemistry (Paraffin-embedded Sections)

**Image 1.** Immunohistochemistry of paraffin-embedded Human gastric cancer using RARRES1 Polyclonal Antibody at dilution of 1:60



#### Western Blotting

**Image 2.** Western Blot analysis of Human liver cancer tissue using RARRES1 Polyclonal Antibody at dilution of 1:300



#### Immunohistochemistry (Paraffin-embedded Sections)

**Image 3.** Immunohistochemistry of paraffin-embedded Human colon cancer using RARRES1 Polyclonal Antibody at dilution of 1:60