



[Go to Product page](#)

Datasheet for ABIN7238453

## anti-TRPM5 antibody

### 3 Images

#### Overview

Quantity:	200 µL
Target:	TRPM5
Reactivity:	Human, Mouse
Host:	Rabbit
Clonality:	Polyclonal
Conjugate:	This TRPM5 antibody is un-conjugated
Application:	Western Blotting (WB), Immunohistochemistry (IHC), ELISA

#### Product Details

Immunogen:	Synthetic peptide of human TRPM5
Isotype:	IgG
Characteristics:	Polyclonal Antibody
Purification:	Affinity purification

#### Target Details

Target:	TRPM5
Alternative Name:	TRPM5 ( <a href="#">TRPM5 Products</a> )
Background:	This gene encodes a member of the transient receptor potential (TRP) protein family, which is a diverse group of proteins with structural features typical of ion channels. This protein plays an important role in taste transduction, and has characteristics of a calcium-activated, non-selective cation channel that carries Na <sup>+</sup> , K <sup>+</sup> , and Cs <sup>+</sup> ions equally well, but not Ca(2 <sup>+</sup> ) ions. It is

## Target Details

---

activated by lower concentrations of intracellular Ca(2+), and inhibited by higher concentrations. It is also a highly temperature-sensitive, heat activated channel showing a steep increase of inward currents at temperatures between 15 and 35 degrees Celsius. This gene is located within the Beckwith-Wiedemann syndrome critical region-1 on chromosome 11p15.5, and has been shown to be imprinted, with exclusive expression from the paternal allele.

---

Molecular Weight: 131 kDa

---

NCBI Accession: [NP\\_055370](#)

---

UniProt: [Q9NZQ8](#)

## Application Details

---

---

Application Notes: WB 1:500-1:2000, IHC 1:50-1:200

---

Restrictions: For Research Use only

## Handling

---

---

Format: Liquid

---

Concentration: 0.6 mg/mL

---

Buffer: PBS with 0.05 % sodium azide and 50 % glycerol, PH7.4

---

Preservative: Sodium azide

---

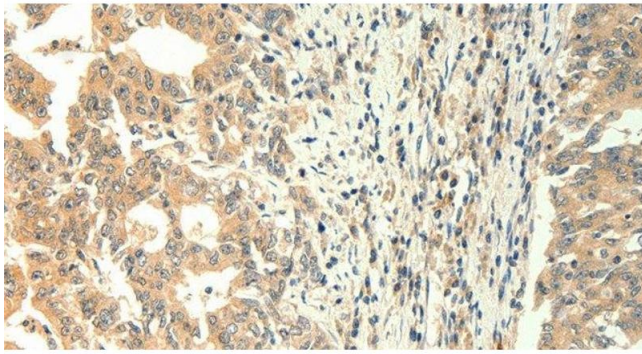
Precaution of Use: This product contains Sodium azide: a POISONOUS AND HAZARDOUS SUBSTANCE which should be handled by trained staff only.

---

Storage: -20 °C

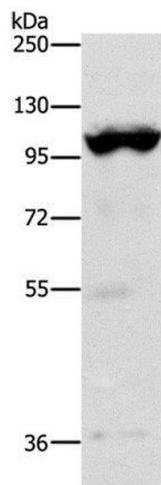
---

Storage Comment: Store at -20°C. Avoid freeze / thaw cycles.



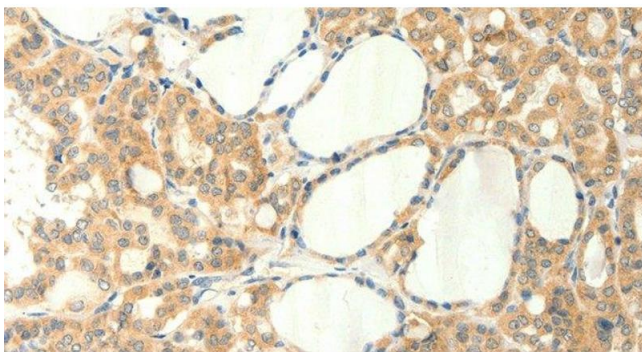
### Immunohistochemistry (Paraffin-embedded Sections)

**Image 1.** Immunohistochemistry of paraffin-embedded Human gastric cancer using TRPM5 Polyclonal Antibody at dilution of 1:60



### Western Blotting

**Image 2.** Western Blot analysis of Mouse heart tissue using TRPM5 Polyclonal Antibody at dilution of 1:1200



### Immunohistochemistry (Paraffin-embedded Sections)

**Image 3.** Immunohistochemistry of paraffin-embedded Human thyroid cancer using TRPM5 Polyclonal Antibody at dilution of 1:60