

Datasheet for ABIN7238465

anti-S1PR3 antibody[Go to Product page](#)**1** Image

Overview

Quantity:	200 µL
Target:	S1PR3
Reactivity:	Human, Mouse
Host:	Rabbit
Clonality:	Polyclonal
Conjugate:	This S1PR3 antibody is un-conjugated
Application:	Western Blotting (WB), ELISA

Product Details

Immunogen:	Synthetic peptide of human S1PR3
Isotype:	IgG
Characteristics:	Polyclonal Antibody
Purification:	Affinity purification

Target Details

Target:	S1PR3
Alternative Name:	EDG3 (S1PR3 Products)
Background:	<p>This gene encodes a member of the EDG family of receptors, which are G protein-coupled receptors. This protein has been identified as a functional receptor for sphingosine 1-phosphate and likely contributes to the regulation of angiogenesis and vascular endothelial cell function.</p> <p>Receptor for the lysosphingolipid sphingosine 1-phosphate (S1P). S1P is a bioactive</p>

Target Details

lysophospholipid that elicits diverse physiological effect on most types of cells and tissues.
When expressed in rat HTC4 hepatoma cells, is capable of mediating S1P-induced cell proliferation and suppression of apoptosis.

Molecular Weight: 42 kDa

NCBI Accession: [NP_005217](#)

UniProt: [Q99500](#)

Application Details

Application Notes: WB 1:500-1:2000

Restrictions: For Research Use only

Handling

Format: Liquid

Concentration: 0.3 mg/mL

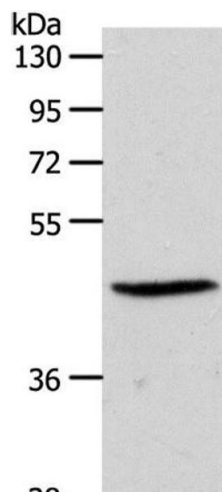
Buffer: PBS with 0.05 % sodium azide and 50 % glycerol, PH7.4

Preservative: Sodium azide

Precaution of Use: This product contains Sodium azide: a POISONOUS AND HAZARDOUS SUBSTANCE which should be handled by trained staff only.

Storage: -20 °C

Storage Comment: Store at -20°C. Avoid freeze / thaw cycles.



Western Blotting

Image 1. Western Blot analysis of PC3 cell using EDG3 Polyclonal Antibody at dilution of 1:550