

Datasheet for ABIN7238501

**anti-ADCY7 antibody**[Go to Product page](#)**1** Image

## Overview

Quantity:	200 µL
Target:	ADCY7 (Adcy7)
Reactivity:	Human
Host:	Rabbit
Clonality:	Polyclonal
Conjugate:	This ADCY7 antibody is un-conjugated
Application:	Immunohistochemistry (IHC), ELISA

## Product Details

Immunogen:	Synthetic peptide of human ADCY7
Isotype:	IgG
Characteristics:	Polyclonal Antibody
Purification:	Affinity purification

## Target Details

Target:	ADCY7 (Adcy7)
Alternative Name:	ADCY7 ( <a href="#">Adcy7 Products</a> )
Background:	This gene encodes a membrane-bound adenylate cyclase that catalyses the formation of cyclic AMP from ATP and is inhibitable by calcium. The product of this gene is a member of the adenylyl cyclase class-4/guanylyl cyclase enzyme family that is characterized by the presence of twelve membrane-spanning domains in its sequences.

## Target Details

NCBI Accession:	<a href="#">NP_001105</a>
UniProt:	<a href="#">P51828</a>
Pathways:	<a href="#">EGFR Signaling Pathway</a> , <a href="#">Neurotrophin Signaling Pathway</a> , <a href="#">Thyroid Hormone Synthesis</a> , <a href="#">cAMP Metabolic Process</a> , <a href="#">Myometrial Relaxation and Contraction</a> , <a href="#">G-protein mediated Events</a> , <a href="#">Interaction of EGFR with phospholipase C-gamma</a>

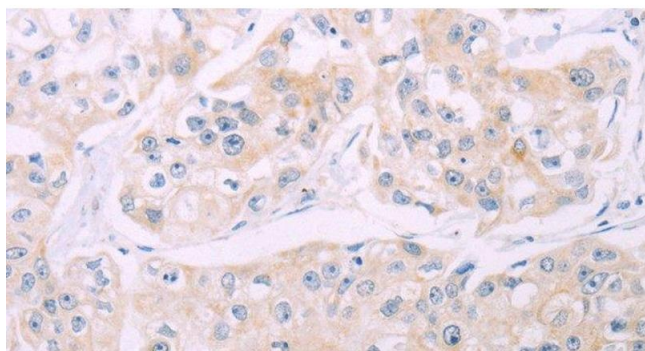
## Application Details

Application Notes:	IHC 1:25-1:100
Restrictions:	For Research Use only

## Handling

Format:	Liquid
Concentration:	0.6 mg/mL
Buffer:	PBS with 0.05 % sodium azide and 50 % glycerol, PH7.4
Preservative:	Sodium azide
Precaution of Use:	This product contains Sodium azide: a POISONOUS AND HAZARDOUS SUBSTANCE which should be handled by trained staff only.
Storage:	-20 °C
Storage Comment:	Store at -20°C. Avoid freeze / thaw cycles.

## Images



### Immunohistochemistry (Paraffin-embedded Sections)

**Image 1.** Immunohistochemistry of paraffin-embedded Human breast cancer tissue using ADCY7 Polyclonal Antibody at dilution 1:60