

Datasheet for ABIN7238522

**anti-AMPD1 antibody**

3 Images

[Go to Product page](#)

## Overview

Quantity:	200 µL
Target:	AMPD1
Reactivity:	Human
Host:	Rabbit
Clonality:	Polyclonal
Conjugate:	This AMPD1 antibody is un-conjugated
Application:	ELISA, Western Blotting (WB), Immunohistochemistry (IHC)

## Product Details

Immunogen:	Synthetic peptide of human AMPD1
Isotype:	IgG
Characteristics:	Polyclonal Antibody
Purification:	Affinity purification

## Target Details

Target:	AMPD1
Alternative Name:	AMPD1 ( <a href="#">AMPD1 Products</a> )
Background:	<p>Adenosine monophosphate deaminase 1 catalyzes the deamination of AMP to IMP in skeletal muscle and plays an important role in the purine nucleotide cycle. Two other genes have been identified, AMPD2 and AMPD3, for the liver- and erythrocyte-specific isoforms, respectively.</p> <p>Deficiency of the muscle-specific enzyme is apparently a common cause of exercise-induced</p>

## Target Details

myopathy and probably the most common cause of metabolic myopathy in the human. Alternatively spliced transcript variants encoding different isoforms have been identified in this gene.

Molecular Weight: 90 kDa

NCBI Accession: [NP\\_000027](#)

UniProt: [P23109](#)

## Application Details

Application Notes: WB 1:1000-1:5000, IHC 1:100-1:300

Restrictions: For Research Use only

## Handling

Format: Liquid

Concentration: 1 mg/mL

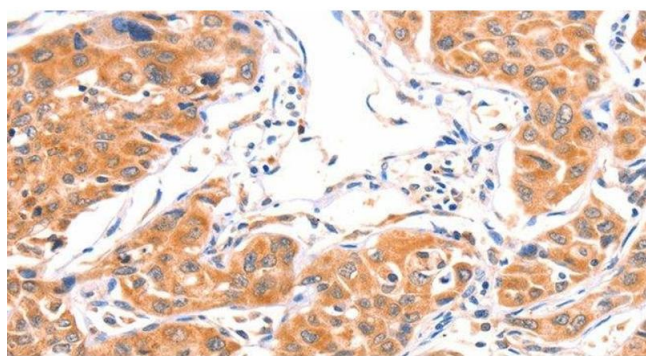
Buffer: PBS with 0.05 % sodium azide and 50 % glycerol, PH7.4

Preservative: Sodium azide

Precaution of Use: This product contains Sodium azide: a POISONOUS AND HAZARDOUS SUBSTANCE which should be handled by trained staff only.

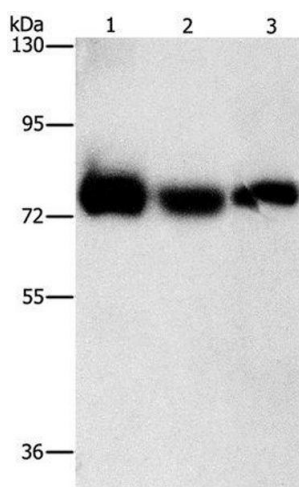
Storage: -20 °C

Storage Comment: Store at -20°C. Avoid freeze / thaw cycles.



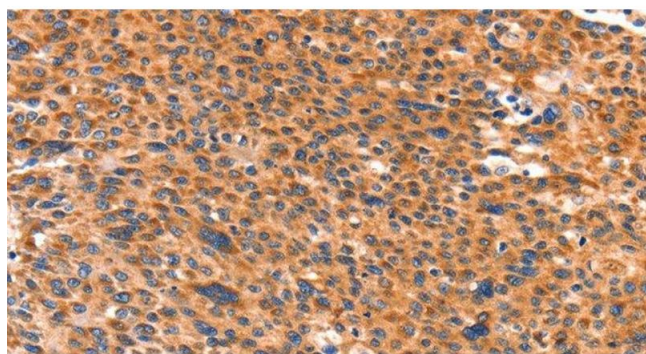
#### Immunohistochemistry (Paraffin-embedded Sections)

**Image 1.** Immunohistochemistry of paraffin-embedded Human lung cancer using AMPD1 Polyclonal Antibody at dilution of 1:80



#### Western Blotting

**Image 2.** Western Blot analysis of Human fetal muscle tissue, K562 and HeLa cell using AMPD1 Polyclonal Antibody at dilution of 1:1600



#### Immunohistochemistry (Paraffin-embedded Sections)

**Image 3.** Immunohistochemistry of paraffin-embedded Human liver cancer using AMPD1 Polyclonal Antibody at dilution of 1:80