

Datasheet for ABIN7238540
anti-SHROOM2 antibody[Go to Product page](#)

2 Images

Overview

Quantity:	200 µL
Target:	SHROOM2
Reactivity:	Human
Host:	Rabbit
Clonality:	Polyclonal
Conjugate:	This SHROOM2 antibody is un-conjugated
Application:	ELISA, Immunohistochemistry (IHC)

Product Details

Immunogen:	Synthetic peptide of human SHROOM2
Isotype:	IgG
Characteristics:	Polyclonal Antibody
Purification:	Affinity purification

Target Details

Target:	SHROOM2
Alternative Name:	SHROOM2 (SHROOM2 Products)
Background:	The protein encoded by this gene shares significant similarities with the apical protein from <i>Xenopus laevis</i> which is implicated in amiloride-sensitive sodium channel activity. This gene is a strong candidate gene for ocular albinism type 1 syndrome.

Target Details

NCBI Accession:	NP_001640
UniProt:	Q13796
Pathways:	Cell-Cell Junction Organization , Asymmetric Protein Localization

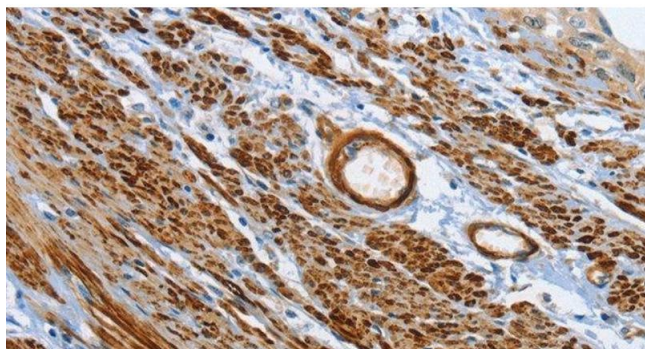
Application Details

Application Notes:	IHC 1:50-1:200
Restrictions:	For Research Use only

Handling

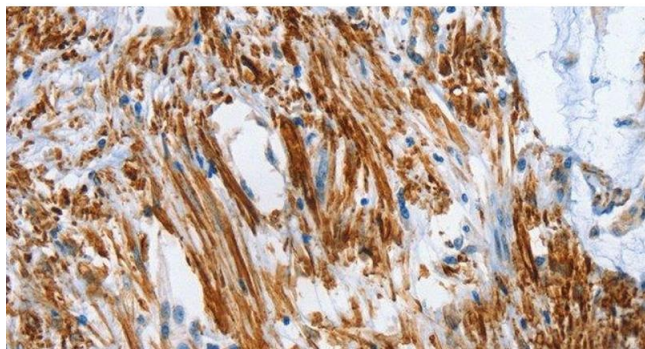
Format:	Liquid
Concentration:	0.4 mg/mL
Buffer:	PBS with 0.05 % sodium azide and 50 % glycerol, PH7.4
Preservative:	Sodium azide
Precaution of Use:	This product contains Sodium azide: a POISONOUS AND HAZARDOUS SUBSTANCE which should be handled by trained staff only.
Storage:	-20 °C
Storage Comment:	Store at -20°C. Avoid freeze / thaw cycles.

Images



Immunohistochemistry (Paraffin-embedded Sections)

Image 1. Immunohistochemistry of paraffin-embedded Human cervical cancer tissue using SHROOM2 Polyclonal Antibody at dilution 1:50



Immunohistochemistry (Paraffin-embedded Sections)

Image 2. Immunohistochemistry of paraffin-embedded Human colon cancer tissue using SHROOM2 Polyclonal Antibody at dilution 1:50