

Datasheet for ABIN7238558

**anti-AMZ1 antibody**[Go to Product page](#)**1** Image

## Overview

Quantity:	200 µL
Target:	AMZ1
Reactivity:	Human
Host:	Rabbit
Clonality:	Polyclonal
Conjugate:	This AMZ1 antibody is un-conjugated
Application:	Western Blotting (WB), ELISA

## Product Details

Immunogen:	Synthetic peptide of human AMZ1
Isotype:	IgG
Characteristics:	Polyclonal Antibody
Purification:	Affinity purification

## Target Details

Target:	AMZ1
Alternative Name:	AMZ1 ( <a href="#">AMZ1 Products</a> )
Background:	AMZ1 shares sequence similarity with archaeal metalloproteases called archaemetzincins, but it appears to act predominantly as a basic aminopeptidase. Inhibited by the general metalloprotease inhibitors o-phenanthroline and batimastat. Also significantly inhibited by amastatin, which is an inhibitor of aminopeptidases. Not inhibited by 4-(2-aminoethyl)-

## Target Details

benzenesulfonyl fluoride, E-64, and TIMPS (tissue inhibitors of metalloproteinases), which are inhibitors of serine, cysteine, and matrix metalloproteases, respectively.

Molecular Weight: 55 kDa

NCBI Accession: [NP\\_597720](#)

UniProt: [Q400G9](#)

## Application Details

Application Notes: WB 1:500-1:2000

Restrictions: For Research Use only

## Handling

Format: Liquid

Concentration: 0.2 mg/mL

Buffer: PBS with 0.05 % sodium azide and 50 % glycerol, PH7.4

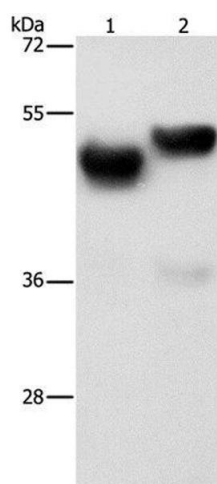
Preservative: Sodium azide

Precaution of Use: This product contains Sodium azide: a POISONOUS AND HAZARDOUS SUBSTANCE which should be handled by trained staff only.

Storage: -20 °C

Storage Comment: Store at -20°C. Avoid freeze / thaw cycles.

## Images



### Western Blotting

**Image 1.** Western Blot analysis of Human fetal brain and liver tissue using AMZ1 Polyclonal Antibody at dilution of 1:1000