

Datasheet for ABIN7238564

anti-ART4 antibody

3 Images

[Go to Product page](#)

Overview

Quantity:	200 µL
Target:	ART4
Reactivity:	Human, Mouse
Host:	Rabbit
Clonality:	Polyclonal
Conjugate:	This ART4 antibody is un-conjugated
Application:	Western Blotting (WB), ELISA, Immunohistochemistry (IHC)

Product Details

Immunogen:	Synthetic peptide of human ART4
Isotype:	IgG
Characteristics:	Polyclonal Antibody
Purification:	Affinity purification

Target Details

Target:	ART4
Alternative Name:	CD297 (ART4 Products)
Background:	This gene encodes a protein that contains a mono-ADP-ribosylation (ART) motif. It is a member of the ADP-ribosyltransferase gene family but enzymatic activity has not been demonstrated experimentally. Antigens of the Dombrock blood group system are located on the gene product, which is glycosylphosphatidylinositol-anchored to the erythrocyte membrane. Allelic variants,

Target Details

some of which lead to adverse transfusion reactions, are known.

Molecular Weight: 36 kDa

NCBI Accession: [NP_066549](#)

UniProt: [Q93070](#)

Application Details

Application Notes: WB 1:500-1:2000, IHC 1:25-1:100

Restrictions: For Research Use only

Handling

Format: Liquid

Concentration: 0.4 mg/mL

Buffer: PBS with 0.05 % sodium azide and 50 % glycerol, PH7.4

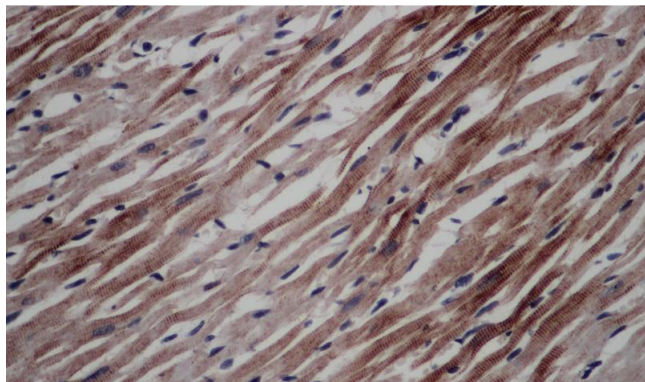
Preservative: Sodium azide

Precaution of Use: This product contains Sodium azide: a POISONOUS AND HAZARDOUS SUBSTANCE which should be handled by trained staff only.

Storage: -20 °C

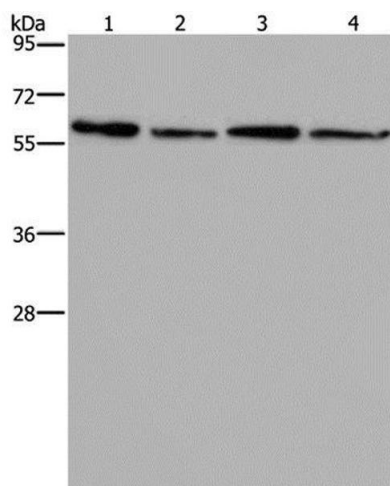
Storage Comment: Store at -20°C. Avoid freeze / thaw cycles.

Images



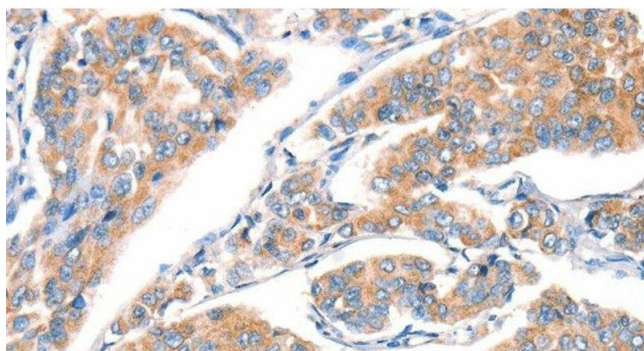
Immunohistochemistry (Paraffin-embedded Sections)

Image 1. Immunohistochemistry of paraffin-embedded Rat heart using CD297 Polyclonal Antibody at dilution of 1:50



Western Blotting

Image 2. Western Blot analysis of Mouse kidney, liver, heart and brain tissue using CD297 Polyclonal Antibody at dilution of 1:667



Immunohistochemistry (Paraffin-embedded Sections)

Image 3. Immunohistochemistry of paraffin-embedded Human breast cancer using CD297 Polyclonal Antibody at dilution of 1:30