

Datasheet for ABIN7238570
anti-RENT1/UPF1 antibody[Go to Product page](#)

3 Images

Overview

Quantity:	200 µL
Target:	RENT1/UPF1 (UPF1)
Reactivity:	Human, Mouse
Host:	Rabbit
Clonality:	Polyclonal
Conjugate:	This RENT1/UPF1 antibody is un-conjugated
Application:	Western Blotting (WB), ELISA, Immunohistochemistry (IHC)

Product Details

Immunogen:	Synthetic peptide of human UPF1
Isotype:	IgG
Characteristics:	Polyclonal Antibody
Purification:	Affinity purification

Target Details

Target:	RENT1/UPF1 (UPF1)
Alternative Name:	UPF1 (UPF1 Products)
Background:	This gene encodes a protein that is part of a post-splicing multiprotein complex involved in both Human, Mouse RNA nuclear export and mRNA surveillance. mRNA surveillance detects exported mRNAs with truncated open reading frames and initiates nonsense-mediated mRNA decay (NMD). When translation ends upstream from the last exon-exon junction, this triggers

Target Details

NMD to degrade mRNAs containing premature stop codons. This protein is located only in the cytoplasm. When translation ends, it interacts with the protein that is a functional homolog of yeast Upf2p to trigger mRNA decapping. Use of multiple polyadenylation sites has been noted for this gene.

Molecular Weight: 124 kDa

NCBI Accession: [NP_002902](#)

UniProt: [Q92900](#)

Pathways: [SARS-CoV-2 Protein Interactome](#)

Application Details

Application Notes: WB 1:200-1:1000, IHC 1:50-1:200

Restrictions: For Research Use only

Handling

Format: Liquid

Concentration: 0.1 mg/mL

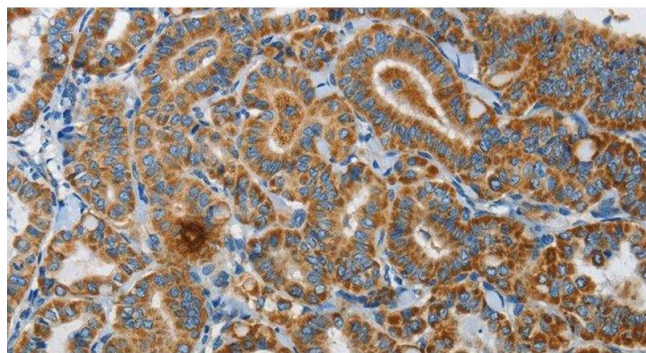
Buffer: PBS with 0.05 % sodium azide and 50 % glycerol, PH7.4

Preservative: Sodium azide

Precaution of Use: This product contains Sodium azide: a POISONOUS AND HAZARDOUS SUBSTANCE which should be handled by trained staff only.

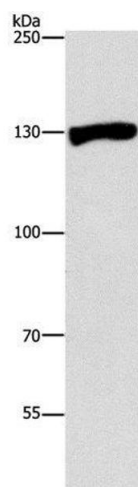
Storage: -20 °C

Storage Comment: Store at -20°C. Avoid freeze / thaw cycles.



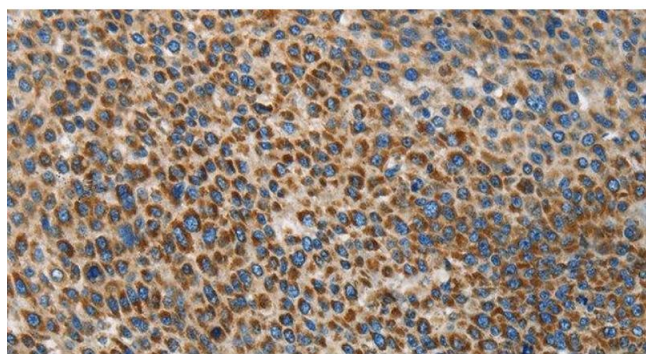
Immunohistochemistry (Paraffin-embedded Sections)

Image 1. Immunohistochemistry of paraffin-embedded Human thyroid cancer using UPF1 Polyclonal Antibody at dilution of 1:35



Western Blotting

Image 2. Western Blot analysis of Raji cell using UPF1 Polyclonal Antibody at dilution of 1:300



Immunohistochemistry (Paraffin-embedded Sections)

Image 3. Immunohistochemistry of paraffin-embedded Human liver cancer using UPF1 Polyclonal Antibody at dilution of 1:35